

Washburn County Health & Human Services Department

Annual Report

2020



Jim LeDuc, Director

304 2nd Street

PO Box 250

Shell Lake, WI 54871

Human Services: 715.468.4747

Public Health: 715.635.4400

humanser@co.washburn.wi.us

MISSION:

“PROMOTING A SAFE AND HEALTHY COMMUNITY”

Core Values:

- *We provide timely and accessible services*
- *We honor individual rights and differences*
 - *We are committed to excellence*
 - *We assess community needs*
- *We utilize well-trained and empathetic staff*
 - *We maximize our resources*
- *We value teamwork and collaboration*

2020 HEALTH & HUMAN SERVICES BOARD

The Washburn County Health & Human Services Department is governed by the Health & Human Services Board, which consists of the following elected officials and community members. The Board has primary responsibility for policy development and guidance for the provision of a full range of comprehensive services provided by the department, a legal entity established by state law.

David Wilson, HHSD Board Chair, County Board Representative

Sandy Johnson, HHSD Vice Chair, County Board Representative

Robert Reiter, County Board Representative

Jerry Smith, County Board Representative

Clint Stariha, County Board Representative

Keith Trembath, County Board Representative

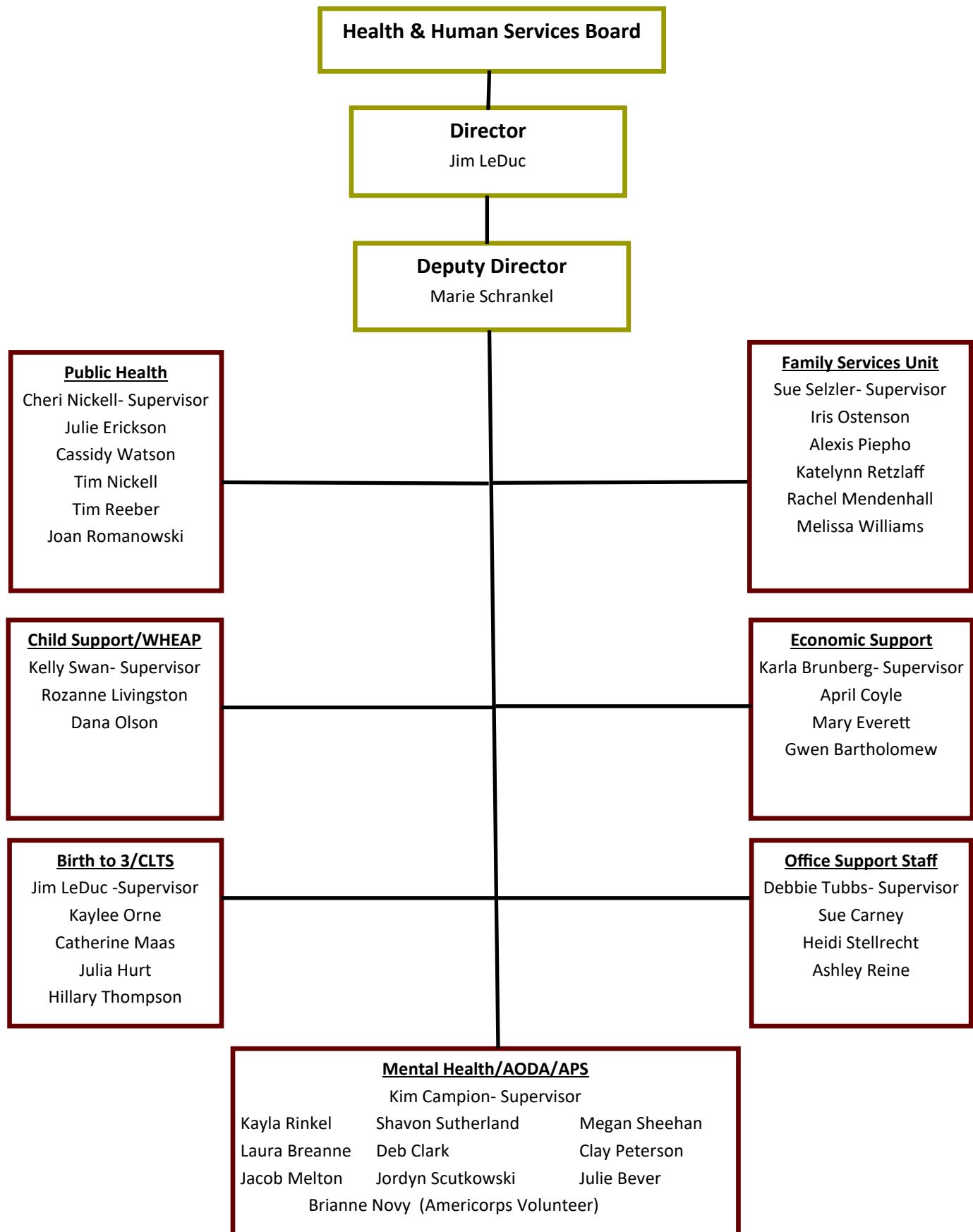
Dr. David Aslyn, Citizen Representative

Katherine Eichten, MD, Citizen Representative

John Sahlstrom, Citizen Representative

Chuck Warner, Citizen Representative

WCHHSD Organizational Chart 2020



WCHHSD 2020 Financial Summary

2020 Gross Expenditures by Department		
Department	Total Dollars	Percentage of Actual
Public Health	\$ 576,006	11%
Human Services	\$ 3,955,291	75%
Economic Support	\$ 431,651	8%
Child Support	\$ 288,171	6%
Total	\$ 5,251,119	100%

2020 Sources of Revenue		
Intergovernmental	\$ 2,624,119	50%
Tax Levy	\$ 1,405,910	27%
Department (Public	\$ 1,221,090	23%
TOTAL	\$ 5,251,119	100%

Economic Support Services (ESS)

The Economic Support Services Section (ESS) provides a variety of financial supports and services to families and individuals. These programs include Child Care, Healthcare, Food Share and Caretaker Supplement. The ESS staff is located in the Washburn County Services Building. Washburn County ESS is part of the 10 county Great Rivers Consortium, serving NW Wisconsin for enrollment and case management services.

Wisconsin Shares (Child Care)

The Wisconsin Shares child care subsidy program supports eligible families by funding a portion of the cost of child care while the parents are working or participating in an approved activity.

Families Served	64
Children Served	105
Total Payments	\$295,064

Food Share

The Economic Support Services Section (ESS) determines eligibility for a variety of public assistance programs. (child care, healthcare, foodshare, caretaker supplement). In partnership with the counties of Barron, Burnett, Chippewa, Douglas, Dunn, Eau Claire, Pierce, Polk, and St Croix, we operate the Great Rivers Income Maintenance Consortium. The Great Rivers Consortium is responsible for the administration of the public assistance programs in all of the above counties.

All recipients	2897
Eligible Adults	1954
Eligible Children	970
Total Foodshare Issuance	\$3,832,665

Healthcare

Medicaid/Badgercare Plus is available to assist participants with the cost of healthcare. Medicaid is available to those who are 65 and older, disabled or blind, and meet the non-financial and financial requirements of the program. BadgerCare Plus provides healthcare coverage for low income customers who meet all non-financial and financial requirements of the program.

Eligible Individuals	4560
Healthcare Expenditures	\$30,974,862

Energy Assistance

Energy Assistance (EA) generally provides a one-time payment to assist with the cost of home heating based on family size, income, and fuel usage. This program can also provide crisis assistance and furnace repair and replacement.

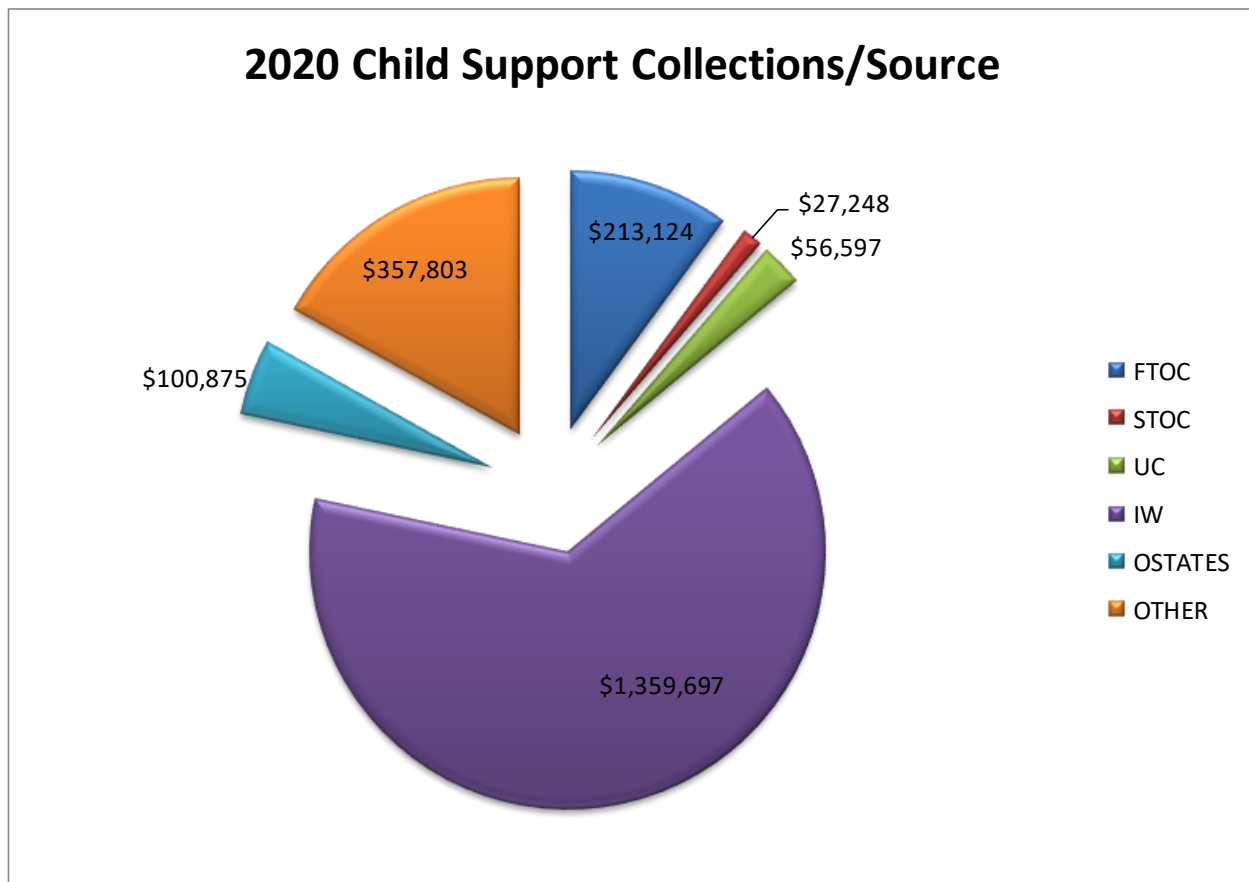
Program Year 2020 (October 1, 2019– September 30, 2020)

	Count	Expendi- tures	Average Benefit
Total Households Applied for Energy Assistance	1074	-	-
Total Households Paid Energy Assistance	1017	\$647,887	-
Total Households Paid LIHEAP Funded Benefits	967	\$405,867	\$420
Total Households Paid Public Benefit Funded Benefits	1012	\$242,020	\$239
Total Households Paid Crisis Assistance	175	\$44,643	-
Total Households Paid LIHEAP Funded Crisis Applications	100	\$29,004	\$290
Total Households Paid Public Benefit Funded Crisis Applications	78	\$15,639	\$201
Total Households Receiving Non Payment Additional Services	-	-	-
Total Households Paid Non-WHEAP Additional Services	-	-	-
Total Heating Unit Repairs Paid	27	\$14,092	\$522
Total Heating Unit Replacements Paid	16	\$88,687	\$5,543
Total Heating Unit Paid Assessment Only	4	\$2,150	\$538
Total Heating Unit Activity Paid	47	\$104,929	-

Child Support

Child Support Programming helps parents get court orders for financial and medical support for their children. It also enforces these support orders when needed, and makes sure that all money collected is paid out correctly. Child support workers help the courts to establish paternity or seek back-payment when needed.

	Jan	Feb	Mar	Apr	May	Jun	July	Aug	Sept	Oct	Nov	Dec	Totals
FTOC	-	986	20,594	13,986	99,695	19,579	8,244	7,733	15,019	3,101	9,758	14,428	\$ 213,124
STOC	202	9,899	4,512	5,076	2,985	2,245	2,302	-	-	28	-	-	\$ 27,248
UC	1,652	2,575	2,627	6,430	8,799	6,715	5,821	2,610	3,363	3,761	4,537	7,707	\$ 56,597
IW	121,326	115,995	115,449	106,520	113,835	112,122	112,577	112,461	113,906	117,646	111,187	106,672	\$1,359,697
OSTATES	10,688	8,871	11,119	10,271	7,473	7,676	8,155	7,215	7,554	7,163	7,360	7,328	\$ 100,875
OTHER	26,849	27,493	32,054	23,916	25,424	28,741	44,734	28,651	26,128	34,865	29,101	29,848	\$ 357,803
	160,717	165,819	186,355	166,199	258,211	177,079	181,834	158,671	165,969	166,565	161,942	165,984	\$2,115,344



FTOC - FEDERAL TAX INTERCEPT

STOC - STATE TAX INTERCEPT

UC - UNEMPLOYMENT COMPENSATION

IW- INCOME WITHHOLDING

OSTATES - OTHER STATES

OTHER - LIENS, ACCOUNT SEIZURES, SALE OF PROPERTY, PAYER PAID

Social Work Programs

Washburn County HHSD provides a broad spectrum of services to serve the lifespan of it's community members. It is the goal of the department to provide choices to consumers to best meet the needs of individuals and families.

Birth– 3

Birth-3 is a Federally Mandated program to provide Early Intervention services to parents and children in their homes or other natural environment. These services are family centered and may include, but are not limited to; service coordination, physical therapy, occupational therapy, speech therapy, nutritional education, parent education & special education. We work with a team of providers in designing a program that both meets the requirements of the State's program and is suited to the unique needs of each family. The length of time for a family's involvement can range from 1-2 months to a total of 3 years, depending on the needs of the child.

New Referrals	34
New Evaluations	13
Ongoing case	7

Children's Long Term Support (CLTS) Services

Children with disabilities that occur during their developmental period frequently have severe impairments that are likely to continue indefinitely. These children and their families often require lifelong services, individualized supports, and other forms of assistance. Community based waiver programs help families support and maintain their children with developmental disabilities, physical disabilities, severe emotional disturbances or autism in their own homes. Services are individually designed to help support the child and family and to promote health, safety, participation and independence in the home and community.

New Referrals	27
New Assessments	27
New Enrollments	20
Waitlist additions	27
Total served	69

Children's Community Options Program (C-COP)

Children's COP provides individualized funding, information and support to families with a severely disabled child to maximize their child's abilities and to keep them safely in the home. The program works collaboratively with the Children's Long Term Support (CLTS) Waiver program for families.

2020 State Allocation	\$18,637
Total families served	23

Mental Health and Substance Abuse

Washburn County provides several services to address mental health and substance abuse needs in the community. In 2020, Washburn County continued to offer core services including emergency services (crisis) linkage and follow up, targeted case management as well as follow up on referrals made to the agency to connect community members to local services and resources. Although many agencies limited their services due to COVID-19, Washburn County continued to work collaboratively with community agencies for substance abuse counseling, mental health counseling and 24/7 mental health emergency services.

Service	# Consumers Served	Service	# Consumers Served
Case Management	13	CCS (Adults and Children)	75
Outpatient Therapy (county funded)	1	CST (Children)	15
Psychiatric Nursing	14	Drug & Alcohol Court	5
Psychiatry	40	AODA Inpatient Treatment	2
CSP (Adults)	5	Emergency Detentions	21

2020 in Review:

Washburn County continued to show growth in the CCS program in 2020, despite the challenges of Covid-19. We served over 74 different consumers with programming aimed at skill development, employment skills, peer support as well as traditional community services such as individual and family therapy and substance abuse counseling. During 2020, there were **147 crisis calls** in Washburn County. Of these calls, there were **21 Emergency Detentions** (involuntary psychiatric hospitalization), **30 voluntary hospitalizations** and **60 diversions**. While this reflected an overall decrease in calls as compared to 2019, it should be noted that calls dropped significantly during the early months of the COVID pandemic. However, the number of Emergency Detentions remained fairly consistent.

Adult Protective Services

Adult Protective Services (APS) provide intervention and follow up for elderly and at-risk individuals (vulnerable adults). APS receives referrals regarding individuals who may be experiencing abuse, neglect, financial exploitation or self-neglect. Washburn County provides a variety of services including: investigations/assessments of abuse or neglect, education/informational resources, and assistance with guardianships and protective placements.

Total referrals	95
Screen ins	76
Guardianships	10
Protective Placements	4
Annual Reviews	38

Family Services Unit

Programs under Family Services include services to children and their families that are experiencing issues in their lives which impact daily functioning. These issues may be delinquency, abuse, neglect, or a need for special services that the parent/guardian may not be able to provide. The focus is to assist families to become self-sufficient in an environment that provides for safety.

Child Protection

When a Child Protective Services Referral is received, the information is reviewed to determine the appropriate response. Initial responses may include referrals to community based services or a more in depth family assessment where family conditions, circumstances and behaviors are assessed to determine if families need agency intervention in order to keep their children safe. Services if needed are coordinated with the family and other agencies focusing on protection of the child and enhancing the ability of the family to function as a responsible nurturing unit. Services may be voluntary or court ordered.

In 2020, the Department received 215 Child Protective Referrals. Of these, 56 were screened in for investigation.

Reports Investigated/Assessed in 2020

Type of Report	# of Incidents	# of Children	# of Substantiated Referrals	# of Children with a Substantiation
Physical Abuse	17	22	1	1
Neglect	32	53	7	7
Sexual Abuse	11	13	1	1
Emotional Abuse	4	6	0	0
Other (unborn)	3	3	0	0
TOTALS	67	97	9	9

Child Welfare

Some families are referred for situations where there may be concerns that do not require a child protection response. These Child Welfare Referrals are reviewed to determine the best response. Services are often preventative and may be provided by the agency or referred to community resources.

In 2020, 68 Service reports were received and 27 were opened for assessment.

Out of Home Care

Placements outside of the home are utilized when children/juveniles are not able to live in their own home because they are unsafe, have special care or treatment needs, or other circumstances exist that they are unable to remain in their home. Generally, placement in out-of-home care is temporary and intended to give families time to make necessary changes so that the child can live safely in his or her home. Most children in foster care return home to their families.

2020 Placement Types

Placement Type	# youth served	Placement Type	# youth served
Relative Care	13	Group Home	2
County Foster Care	19	Residential Care Centers	4
Treatment Foster Care	11	Secure Detention	3
Subsidized Guardianship	12	Juvenile Corrections	0
Total Youth Placed	50	Total number of Placements	58

Voluntary Kinship Care

Kinship Care is an early intervention program. The purpose of this program is to provide support when a child is unable to live in their own home and lives with a relative. The relative must meet certification requirements. Without the support and assistance of this program, children may otherwise be subject to abuse and/or neglect and fall under jurisdiction of Children's Court.

15 children were served in Kinship Care by 10 Kinship providers.

County Licensed Foster homes: 7

Foster Home Licensure

The agency is responsible to recruit and license foster families. No new homes were licensed in 2020 (largely due to COVID) bringing our total to 7 County Foster Homes at year's end.

Juvenile Court Intake

Referrals are made to Juvenile Court Intake when a youth has been involved in breaking the law (delinquency), is truant from home or school, or is in need of protection or services. The goal of Juvenile Court Intake Services is to address the behavior by holding the juvenile accountable and equip the youth with competencies to live responsibly and productively while protecting the public. Services are provided to the youth and their family.

Ages:	# of youth	Sex:	# of youth
Under 10	1	Female	13
10-12	4	Male	29
13-15	28		
16-17	9	Total	42

66% of offenses were committed by youth ages 13-15

84% of Delinquency referrals were able to remain out of the formal court process

Dispositions	# of youth
Deferred Prosecution	13
Formal Delinquency Petitions	7
Counsel and Release	5
Warning Letter Sent	5
Other/Dismissed	13
Referral to CCS Program	4

Offense by Type

Offense	# of youth	Offense	# of youth
Disorderly Conduct	28	1st Degree Reckless Injury	1
Criminal Damage to Property	3	Drug Charges	2
Theft	2	Obstruction	2
Failure to Render Aid	1	Graffiti	2
Criminal Trespass	4	Battery to Law Enforcement	1
School Truancy	4	Battery	4
Identity Theft	1	Violate Stay at Home Order	2
		Total	57