

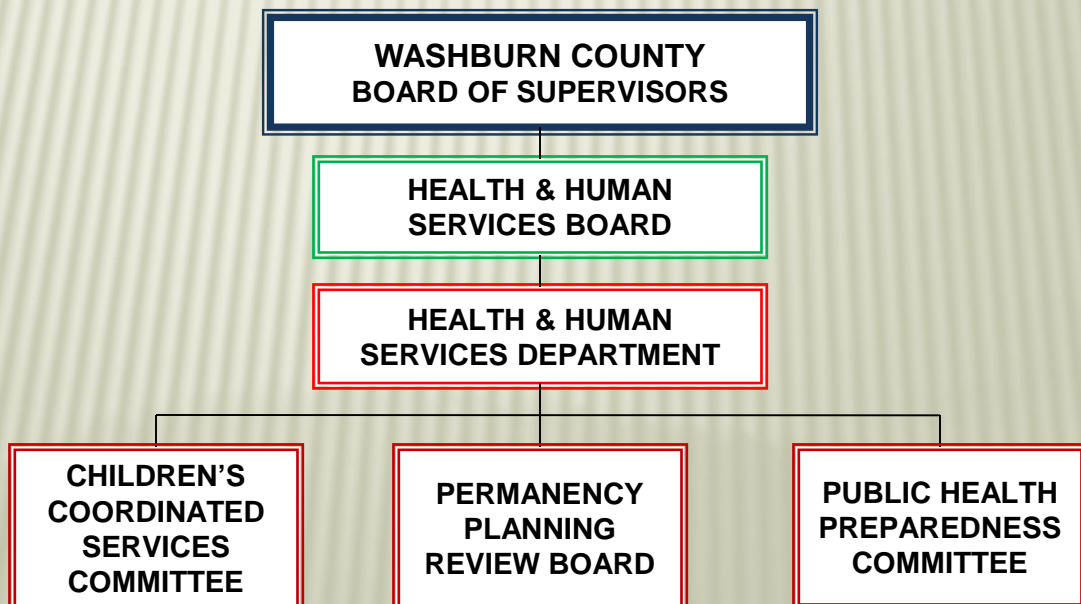


2018 ANNUAL REPORT

MISSION: PROMOTING A SAFE AND HEALTHY COMMUNITY

- We provide timely and accessible services
- We honor individual rights and differences
- We are committed to excellence
- We assess community needs
- We utilize well-trained and empathetic staff
- We maximize our resources
- We value teamwork and collaboration

Health & Human Services Governance Structure 2018



WASHBURN COUNTY HEALTH & HUMAN SERVICES BOARD 2018

The Washburn County Health & Human Services Department is governed by the Health & Human Services Board, which consists of the following elected officials and community members:

County Board Supervisors:

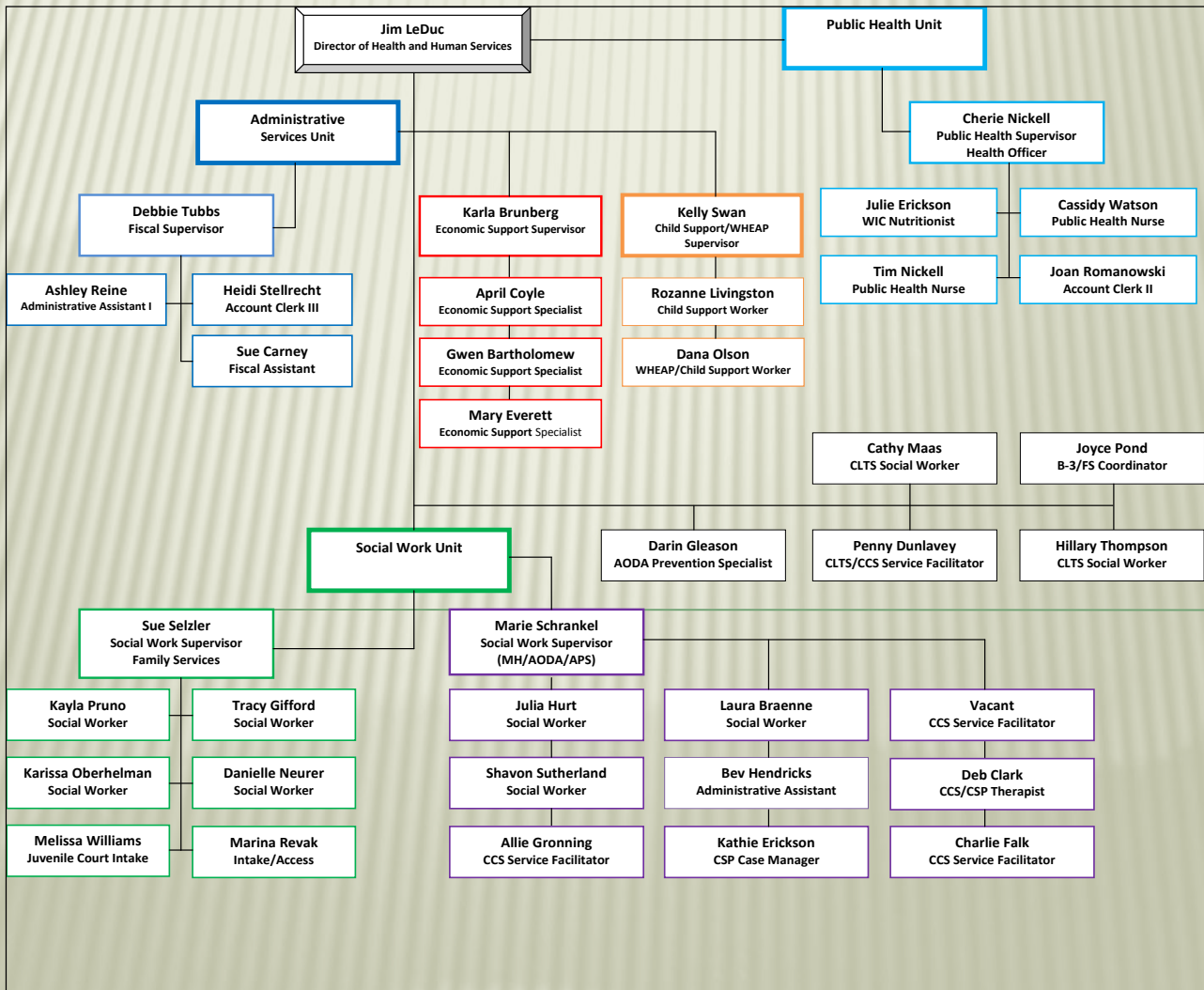
David Wilson	Robert Reiter
Jerry Smith	Sandy Johnson
James Dohm	Clint Stariha

Citizens:

Jean Serum
Katherine Eitchen, MD
Janice Tripp
John Sahlstrom

The Board has primary responsibility for the oversight of the provision of a full range of comprehensive services by the Health & Human Services Department (HHSD), a legal entity established by state law.

Washburn County Health & Human Services Department



FINANCIAL REPORT

2018 GROSS EXPENDITURES BY DEPARTMENT

Public Health	11%	\$ 488,068
Human Services	75%	\$ 3,448,925
Economic Support	8%	\$ 382,159
<u>Child Support</u>	<u>6%</u>	<u>\$ 266,671</u>
Total	100%	\$ 4,585,823

2018 SOURCES OF REVENUE

Intergovernmental	48%	\$ 2,176,775
Tax Levy	31%	\$ 1,435,910
<u>Department (Public Charges)</u>	<u>21%</u>	<u>\$ 973,138</u>
Total	100%	\$ 4,585,823

ECONOMIC SUPPORT SERVICES (ESS)

The Economic Support Services Section (ESS) provides a variety of financial supports and services to families and individuals. The programs include Child Care, Healthcare, Food Share and Caretaker Supplement. The ESS staff is located in the Ed Elliott building and provides assistance to families, adults and the elderly.

Child Care

Staff certifies in-home family child care providers and provides financial assistance for families to aid in paying for the costs of child day care.

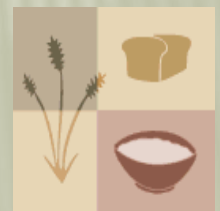


# of Families served (2018)	57
# of Children served (2018)	101
Total Payments (2018)	\$178,806

FoodShare (Food Stamps)

Foodshare Wisconsin was created to help stop hunger and improve nutrition and health. Foodshare assists people with limited money buy the food they need for good health. The families/individuals served are low income, living on a fixed income, have lost their job, or and not able to work.

**All Recipients (2018)	2989
Eligible Adults	1998
Eligible Children	1097
Foodshare Issuance	\$2,212,110
** Adults and children do not sum to total recipients because children that become adults are counted in both adults and children	



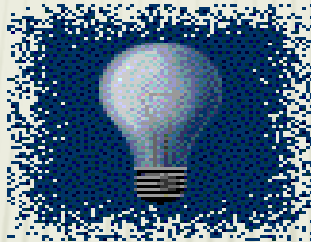
Healthcare

Medicaid/BadgerCare Plus is available to assist participants with the cost of health care. Medicaid is available to those who are 65 or older, disabled or blind, and meet the nonfinancial and financial requirements of the program. BadgerCare Plus provides healthcare coverage for low income customers who meet all nonfinancial and financial requirements of the program.



Eligible Individuals (2018)	4721
Healthcare Expenditures (2018)	\$29,751,409

Energy Assistance



Energy Assistance (EA) generally provides a one-time payment, based on family size, income and fuel usage, to assist with the cost of home heating. It can also provide crisis assistance and furnace repair and replacement.

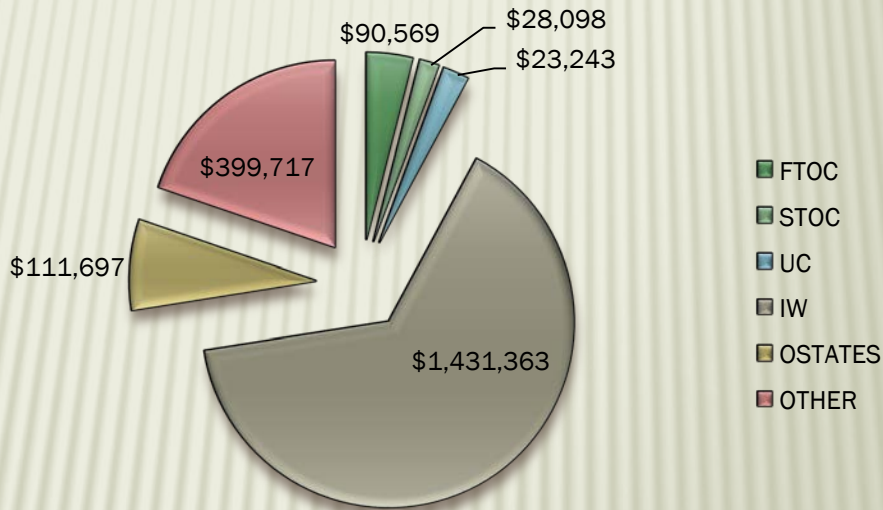
Fiscal year 2018

	Count	Expenditures	Average Benefit
Total Households Applied for Energy Assistance	1022	-	-
Total Households Paid Energy Assistance	974	\$593,644	-
Total Households Paid LIHEAP Funded Benefits	934	\$400,203	\$428
Total Households Paid Public Benefit Funded Benefits	966	\$193,441	\$200
Total Households Paid Crisis Assistance	193	\$68,422	-
Total Households Paid LIHEAP Funded Crisis Applications	121	\$40,997	\$339
Total Households Paid Public Benefit Funded Crisis Applications	97	\$27,425	\$283
Total Households Receiving Non Payment Additional Services	9	-	-
Total Households Paid Non-WHEAP Additional Services	-	-	-
Total Heating Unit Repairs Paid	26	\$3,529	\$136
Total Heating Unit Replacements Paid	14	\$41,960	\$2,997
Total Heating Unit Paid Assessment Only	3	\$264	\$88
Total Heating Unit Activity Paid	43	\$45,753	-

Child Support

	Jan	Feb	Mar	Apr	May	Jun	July	Aug	Sept	Oct	Nov	Dec	Totals
FTOC	1,743	-	29,532	15,413	13,138	6,389	3,641	2,459	7,469	6,352	1,957	2,476	\$ 90,569
STOC	-	6,906	6,962	6,592	3,577	1,535	705	110	391	1,267	-	54	\$ 28,098
UC	4,894	3,932	3,476	4,037	1,462	356	138	455	613	67	895	2,918	\$ 23,243
IW	117,726	102,631	117,927	116,520	120,674	117,228	128,322	130,545	121,851	127,375	121,104	109,460	\$1,431,363
OSTATES	8,548	9,941	9,555	9,474	11,535	9,229	9,190	9,790	8,259	9,027	9,692	7,455	\$ 111,697
OTHER	74,253	27,396	34,293	24,656	32,736	27,238	29,240	29,350	32,856	28,459	26,537	32,703	\$ 399,717
	\$207,165	\$150,807	\$201,746	\$176,691	\$183,122	\$161,975	\$171,236	\$172,709	\$171,440	\$172,547	\$160,186	\$155,066	\$ 2,084,688

2018 Child Support Collections/Source



FTOC	Federal Tax Intercept
STOC	State Tax Intercept
UC	Unemployment Compensation
IW	Income Withholding
OSTATES	Other States
OTHER	Liens, Account Seizures, Sale of Property, Payer Paid

SOCIAL WORK UNIT MISSION STATEMENT

“Enhancing self-sufficiency and quality of life while preserving the dignity of children, individuals, and families.”

Birth – 3

Birth-3 is a Federally Mandated program to provide Early Intervention services to parents and children in their homes or other natural environment. These services are family centered and may include, but are not limited to; service coordination, physical therapy, occupational therapy, speech therapy, nutritional education, parent education & special education. We work with a team of providers in designing a program that both meets the requirements of the State’s program & is suited to the unique needs of each family.

In 2018 there were 47 new referrals to the program.

22 new evaluations were completed and 9 families received ongoing services.

The length of time for a family’s involvement can range from 1-2 months to a total of 3 years, depending on the child.

Children’s Community Options Program (C-COP)

Children’s COP provides individualized funding, information and support to families with a severely disabled child to maximize their child’s abilities and to keep them safely in the home. In 2018 we received \$17,000 and were able to assist 10 families in our county. The program works collaboratively with the Children’s Long Term Support (CLTS) Waiver program for families.

Children’s Long Term Support (CLTS) Services

Children with disabilities that occur during their developmental period frequently have severe impairments that are likely to continue indefinitely. These children and their families often require lifelong services, individualized supports, and other forms of assistance. Community based waiver programs help families support and maintain their children with developmental disabilities, physical disabilities, severe emotional disturbances or autism in their own homes. Services are individually designed to help support the child and family and to promote health, safety, participation and independence in the home and community. In 2018, 54 children and families were served through the CLTS Waiver Program: 16 new CLTS referrals, completed 16 assessments, 15 children were placed on the CLTS waiting list (26 total) and 31 new children enrolled.

MENTAL HEALTH & AODA

Washburn County provides several services to address mental health and substance abuse needs in the community. In 2018, Washburn County continued to offer core services including emergency services (crisis) linkage and follow up, targeted case management as well as follow up on referrals made to the agency to connect community members to local services and resources. Washburn County continued to work collaboratively with community agencies for substance abuse counseling, mental health counseling and 24/7 mental health emergency services.

New for 2018:

New programming in 2018 included establishing the **Mental Health Task Force of Washburn County**. Representatives from all four school districts, community counseling agencies, Lakeland Family Resource Center, law enforcement and other agencies were represented. In 2018, the MFTHWC successfully implemented the YScreen project in all four school districts. The goal of this project is to screen freshman students for mental health issues and, more specifically, acute suicidal ideation and refer out for services. Approximately 120 youth were screened in 2018.

In addition, the **Community Alliance for Prevention** was established in August 2018. This coalition focuses on prevention for substance use. The group was able to identify target areas to address including alcohol, vaping and marijuana use amongst youth. Washburn County was awarded the Brighter Futures Initiative grant to help support these efforts. In addition, the department was able to add an AODA Prevention Specialist position to spearhead projects and outreach in this area.

Finally, the department worked with community partners to create a **Jail to Community Transition Program**. This program works with inmates while in the jail setting to establish rapport with a service facilitator prior to release and set up services once they return to the community. This program includes an option for a sober living environment in the community. Residents of the home are enrolled in CCS and/or drug court programming as well as on probation to provide accountability as well as services to build skills to lead a pro-social lifestyle.

Expansion:

Washburn County greatly expanded the CCS program, which began in 2017. In 2018, 75 individuals were enrolled in the CCS program. Within Washburn County, children experiencing mental health issues and have been diagnosed with a severe emotional disturbance are eligible for the Children Come First/Coordinated Services Team. In 2018, 10 families were served through this program.

During 2018, there were 244 crisis calls in Washburn County. Of these calls, there were 38 Emergency Detentions (involuntary psychiatric hospitalization), 18 voluntary hospitalizations and 60 diversions.

MENTAL HEALTH & AODA SERVICE**# OF CONSUMERS**

CASE MANAGEMENT	10
OUTPATIENT THERAPY (County Funded)	2
PSYCH NURSING	19
PSYCHIATRY	56
CSP (Adults)	5
CCS (Adults & Children)	75
CST (Children)	10
AODA Inpatient/Residential Treatment	2
DRUG COURT	8
EMERGENCY DETENTIONS	30

Adult Protective Services (APS)

Adult Protective Services (APS) provide intervention and follow up for elderly and at-risk individuals (vulnerable adults). APS receives referrals regarding individuals who may be experiencing abuse, neglect, financial exploitation or self-neglect. Washburn County provides a variety of services including: investigations/assessments of abuse or neglect, education/informational resources, and assistance with guardianships and protective placements. In 2018, Washburn County received 54 Adult Protective Service referrals, 14 of those required further investigation, assessment and follow up services.

Washburn County assists in establishing Guardianships for indigent individuals. Guardianship may be pursued once a physician or psychologist has found a person to be incompetent (with permanent incapacities) due to developmental disability, serious and persistent mental illness, degenerative brain disorder, or other like capacities. There were 15 guardianships initiated and 4 protective placements. New protective placements require a comprehensive evaluation and existing protective placements require an annual review to be completed, 29 annual reviews were completed in 2018.

FAMILY SERVICES

Programs under Family Services include services to children and their families that are experiencing issues in their lives which impact daily functioning. These issues may be delinquency, abuse, neglect, or a need for special services that the parent/guardian may not be able to provide. The focus is to assist families to become self sufficient in an environment that provides for safety.

Child Protection

When a Child Protective Services Referral is received, the information is reviewed to determine the appropriate response. Initial responses may include referrals to community based services or a more in depth family assessment where family conditions, circumstances and behaviors are assessed to determine if families need agency intervention in order to keep their children safe. Services if needed are coordinated with the family and other agencies focusing on protection of the child and enhancing the ability of the family to function as a responsible nurturing unit. Services may be voluntary or court ordered.

Referrals received in 2018:

186 Child Protective Service (CPS) Referrals received
59 Screened in for investigation

Reports Investigated/Assessed in 2018:

Type of Report	# of Incidents	# of Children	# of Substantiated Referrals	# of Children with a Substantiation
Physical Abuse	17	18	5	8
Neglect	26	43	4	10
Sexual Abuse	15	15	7	6
Emotional Abuse	1	1	0	0
Other (unborn)	2	2	-	-
TOTALS	61	79	16	24

13 CHIPS (Child In Need of Protection and/or Services) Petitions were filed in 2018

Child Welfare

Some families are referred for situations where there may be concerns that do not require a child protection response. These Child Welfare Referrals are reviewed to determine the best response. Services are often preventative and may be provided by the agency or referred to community resources.

117 Services Reports were received and **58** were opened for assessments.

Out Of Home Care

Placements outside of the home are utilized when children/juveniles are not able to live in their own home because they are unsafe, have special care or treatment needs, or other circumstances exist that they are unable to remain in their home. Generally, placement in out-of-home care is temporary and intended to give families time to make necessary changes so that the child can live safely in his or her home. Most children in foster care return home to their families.

21 Children and youth were served in out of home care in **30** different placements.

This table lists the number of utilizations at the different levels of care:

Relative Care	3	Group Home	1
County Foster Care	8	Residential Care Centers	0
Treatment Foster Care	10	Secure Detention	2
Subsidized Guardianship	13	Juvenile Corrections	0

Voluntary Kinship Care:

Kinship Care is an early intervention program. The purpose of this program is to provide support when a child is unable to live in their own home and lives with a relative. The relative must meet certification requirements. Without the support and assistance of this program, children may otherwise be subject to abuse and/or neglect and fall under jurisdiction of Children’s Court.

****12 Children were served in Kinship Care by 10 Kinship providers.****

Foster Home Licensure:

The agency is responsible to recruit and license foster families. Four new homes were licensed in 2018 bringing our total to 5 County Foster Homes at year’s end.

Juvenile Court Intake

Referrals are made to Juvenile Court Intake when a youth has been involved in breaking the law (delinquency), is truant from home or school, or is in need of protection or services. The goal of Juvenile Court Intake Services is to address the behavior by holding the juvenile accountable and equip the youth with competencies to live responsibly and productively while protecting the public. Services are provided to the youth and family.

#	<u>Ages:</u>	#	<u>Sex:</u>
1	Under 10	19	Female
22	10-12	60	Male
42	13-15		
14	16-17	79	Total

#	<u>Dispositions:</u>
29	Deferred Prosecution
13	Formal Delinquency Petitions
4	Counsel and Release With Conditions
4	Counsel and Release
6	Warning Letter Sent
22	Other

#	<u>Offenses:</u>	#	<u>Offenses:</u>
31	Disorderly Conduct	2	Conspiracy
6	Criminal Damage to Property	10	Drug Charges
13	Theft	5	Obstruction
1	Negligent Handling of Burning Material	1	Place Foreign Substance in Edibles
2	Criminal Trespass	1	Graffiti
5	School Truancy	9	Sex Offenses
12	Battery	1	Burglary
1	Domestic Abuse	1	Threat to Law Enforcement
1	Terroristic Threats	102	Total