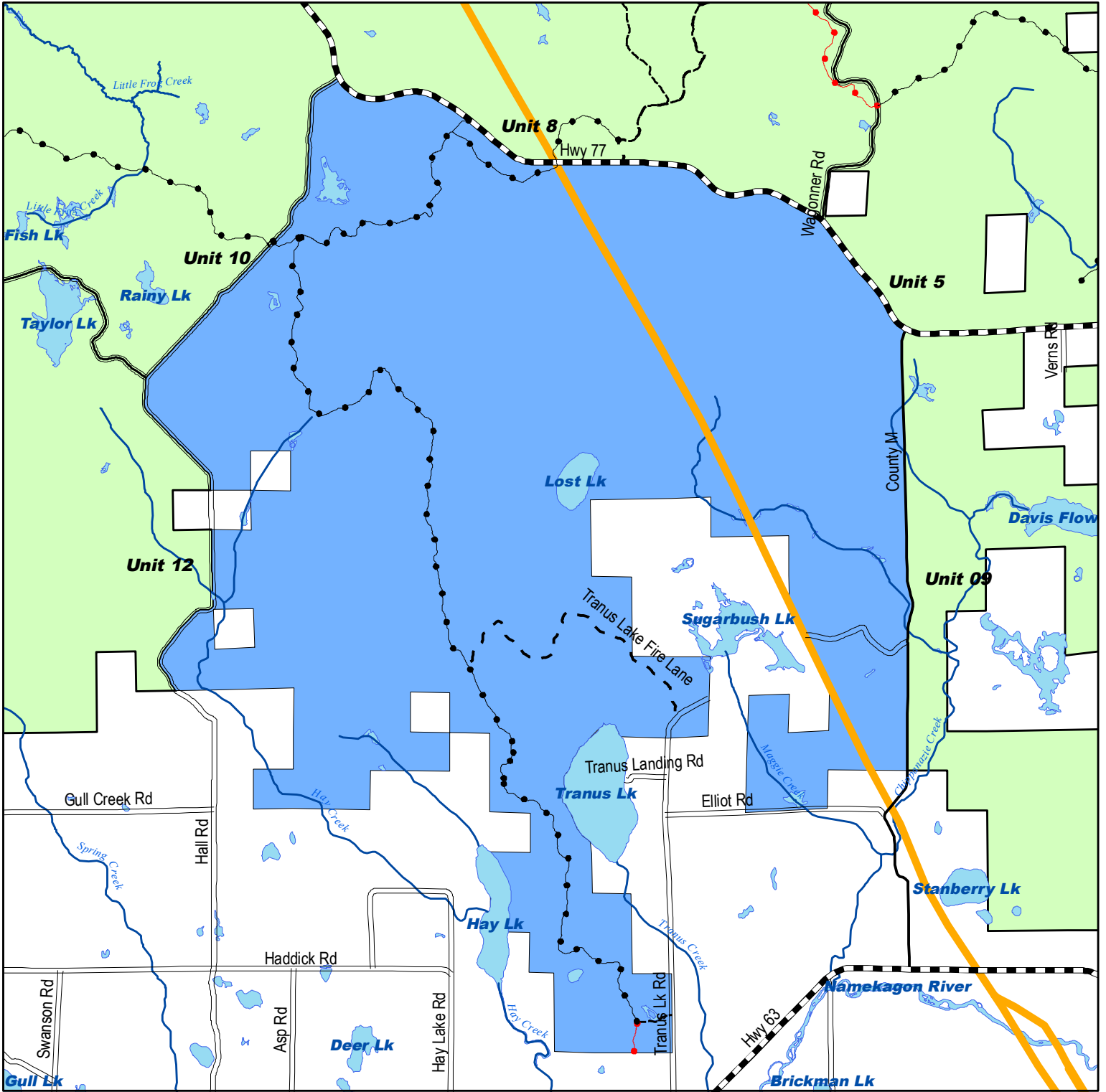


Integrated Resource Management Unit

Lost Lake - Unit 11

Only designated trails open to motor vehicles (see back for more information)



Legend

- Trail Open to Cars, Trucks, ATV
- Trail Open to Cars, Trucks, ATV but restricted to under 900 lbs Dec 1 to April 1
- Trail Open to ATV and Snowmobile
- Trail Open to ATV and Snowmobile Dec. 1 through April 1

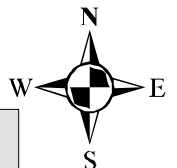
Public Roads

- ▬ State Highway
- ▬ County Highway
- ▬ Township Road
- ▬ County Forest Road
- ▬ Utility Corridor (Pipeline, Powerline, Rail)

- ▬ Streams
- ▬ Water

Motorized Access Classification

- ▬ Closed to motorized use except designated ATV/Snowmobile trails
- ▬ Moderately open to motorized use (see individual unit maps for listing of roads open)
- ▬ Open to motorized use only on established roads and trails
- ▬ Other Forest Units



This map is not a survey of the actual boundary of any property this map depicts. Accuracy is limited by the quality of the public data from which it is derived and is not implied or guaranteed. Washburn County assumes no responsibility for conclusions drawn by the user.