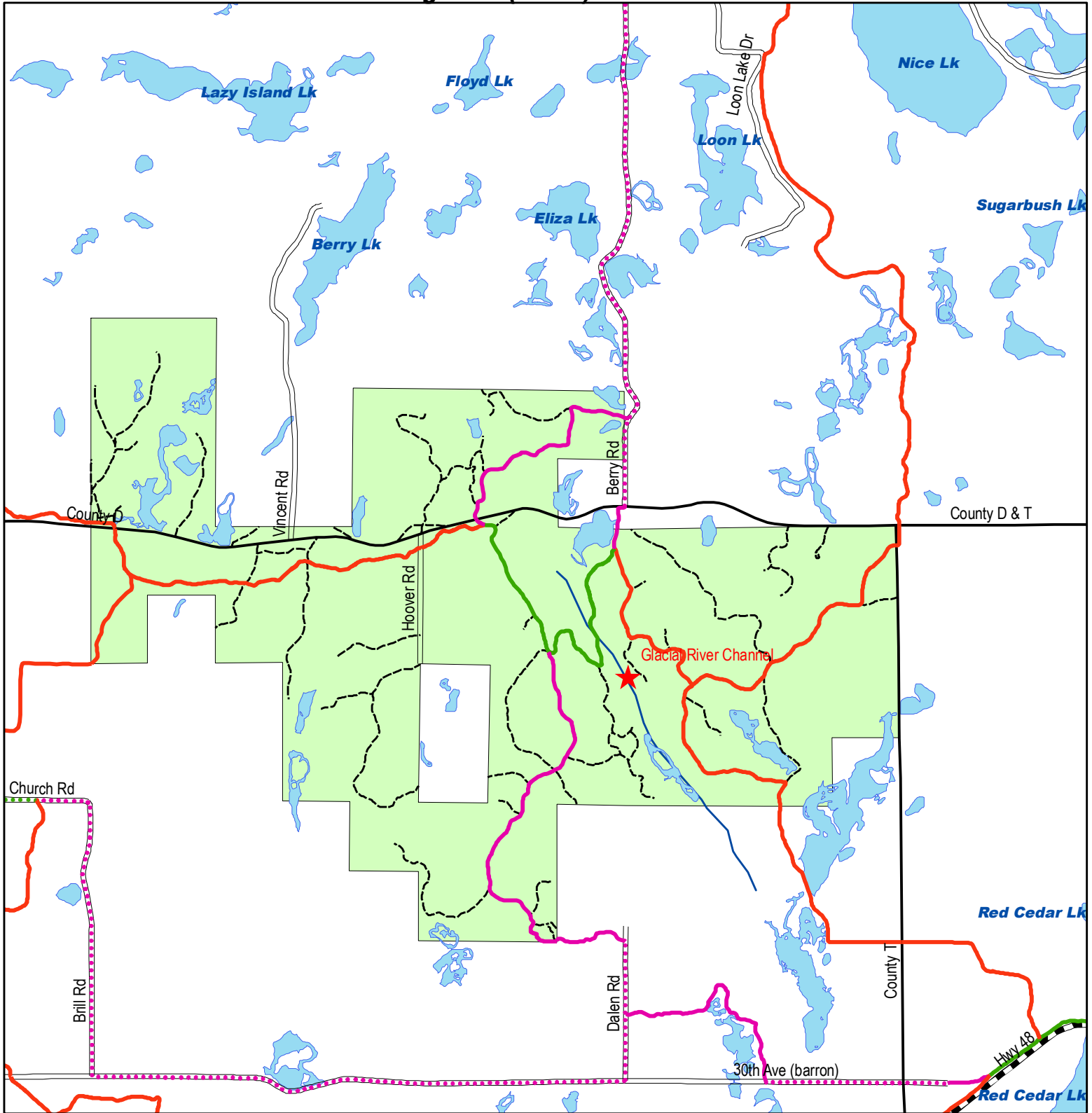
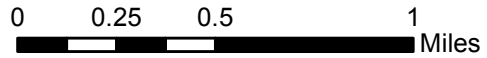


**Integrated Resource Management Unit
Long Lake (south) - Unit 27b**



Legend

- | | | |
|----------------------------|----------------------|--------------------------------|
| ★ Points of Interest | Public Roads | Forest Unit |
| ••••• ATV Route | ▬ State Highway | ▬ Other Forest Units |
| — ATV Trail | ▬ County Highway | ▬ Unit 27b - Long Lake (south) |
| ••••• ATV/Snowmobile Route | ▬ Township Road | |
| — ATV/Snowmobile Trail | ▬ County Forest Road | |
| ••••• Lake Route | ▬ Streams | |
| ••••• Snowmobile Route | | |
| — Snowmobile Trail | | |
| --- Forest Trails | | |



This map is not a survey of the actual boundary of any property this map depicts. Accuracy is limited by the quality of the public data from which it is derived and is not implied or guaranteed. Washburn County assumes no responsibility for conclusions drawn by the user.

