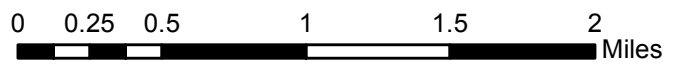
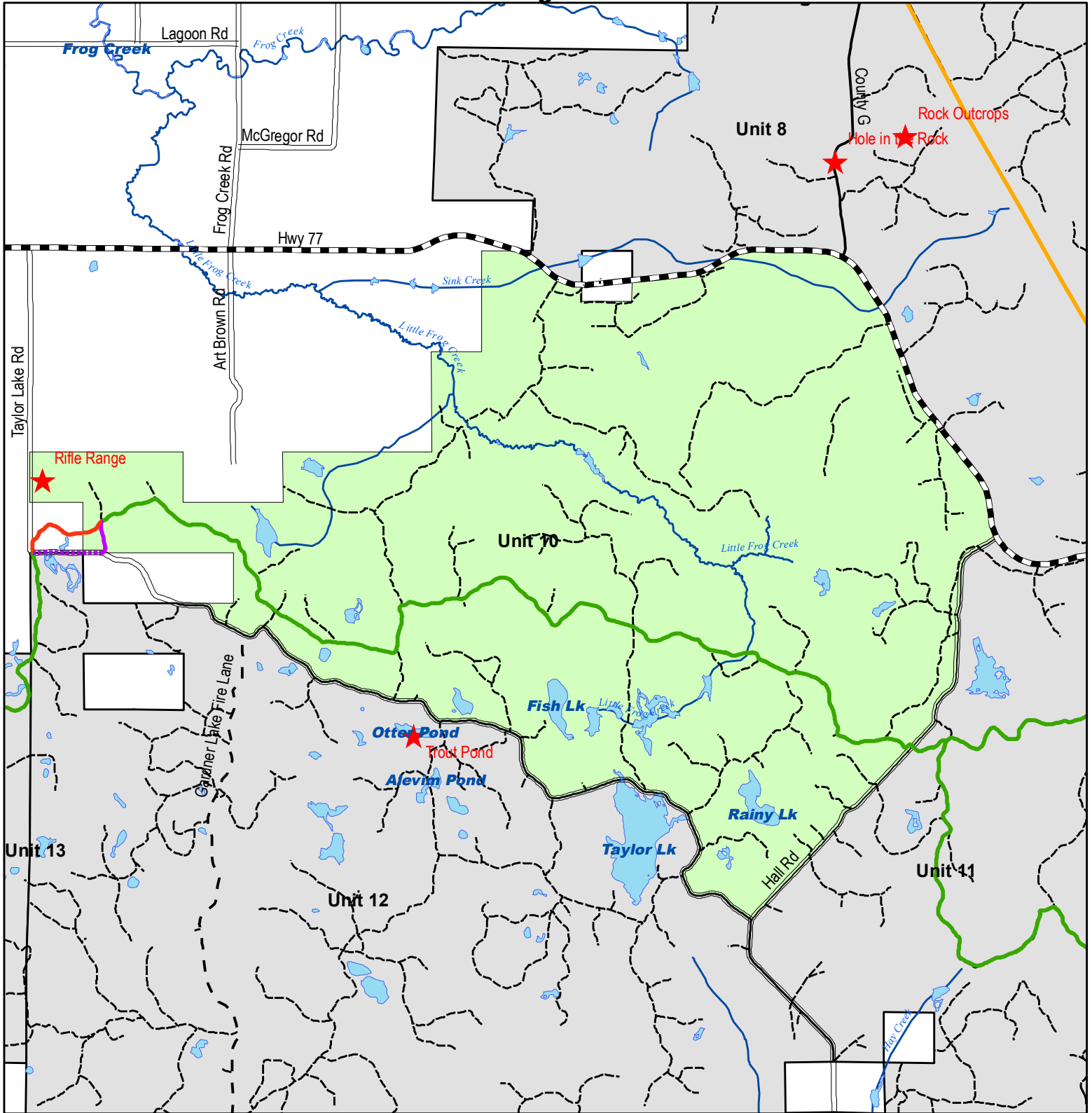


# Integrated Resource Management Unit

## Little Frog - Unit 10



**Legend**

- |  |  |  |
|--|--|--|
| <ul style="list-style-type: none"> <li><span style="color: red;">★</span> Points of Interest</li> <li><span style="color: purple;">⋯</span> ATV Route</li> <li><span style="color: magenta;">—</span> ATV Trail</li> <li><span style="color: green;">—</span> ATV/Snowmobile Trail</li> <li><span style="color: red;">- - -</span> Snowmobile Club Trail</li> <li><span style="color: red;">⋯</span> Snowmobile Route</li> <li><span style="color: orange;">—</span> Snowmobile Trail</li> <li><span style="color: orange;">—</span> Utility Corridor (Pipeline, Powerline, Rail)</li> <li><span style="color: black;">- - -</span> Forest Trails</li> </ul> | <p><b>Public Roads</b></p> <ul style="list-style-type: none"> <li><span style="border-bottom: 2px solid black; width: 20px; display: inline-block;"></span> State Highway</li> <li><span style="border-bottom: 1px solid black; width: 20px; display: inline-block;"></span> County Highway</li> <li><span style="border-bottom: 1px dashed black; width: 20px; display: inline-block;"></span> Township Road</li> <li><span style="border-bottom: 1px dashed black; width: 20px; display: inline-block;"></span> County Forest Road</li> <li><span style="background-color: lightblue; width: 20px; height: 10px; display: inline-block;"></span> Water</li> <li><span style="color: blue;">—</span> Streams</li> </ul> | <p><b>Forest Unit</b></p> <ul style="list-style-type: none"> <li><span style="background-color: lightgrey; width: 20px; height: 10px; display: inline-block;"></span> Other Forest Units</li> <li><span style="background-color: lightgreen; width: 20px; height: 10px; display: inline-block;"></span> Unit 10 - Little Frog</li> </ul> |
|--|--|--|

This map is not a survey of the actual boundary of any property this map depicts. Accuracy is limited by the quality of the public data from which it is derived and is not implied or guaranteed. Washburn County assumes no responsibility for conclusions drawn by the user.

