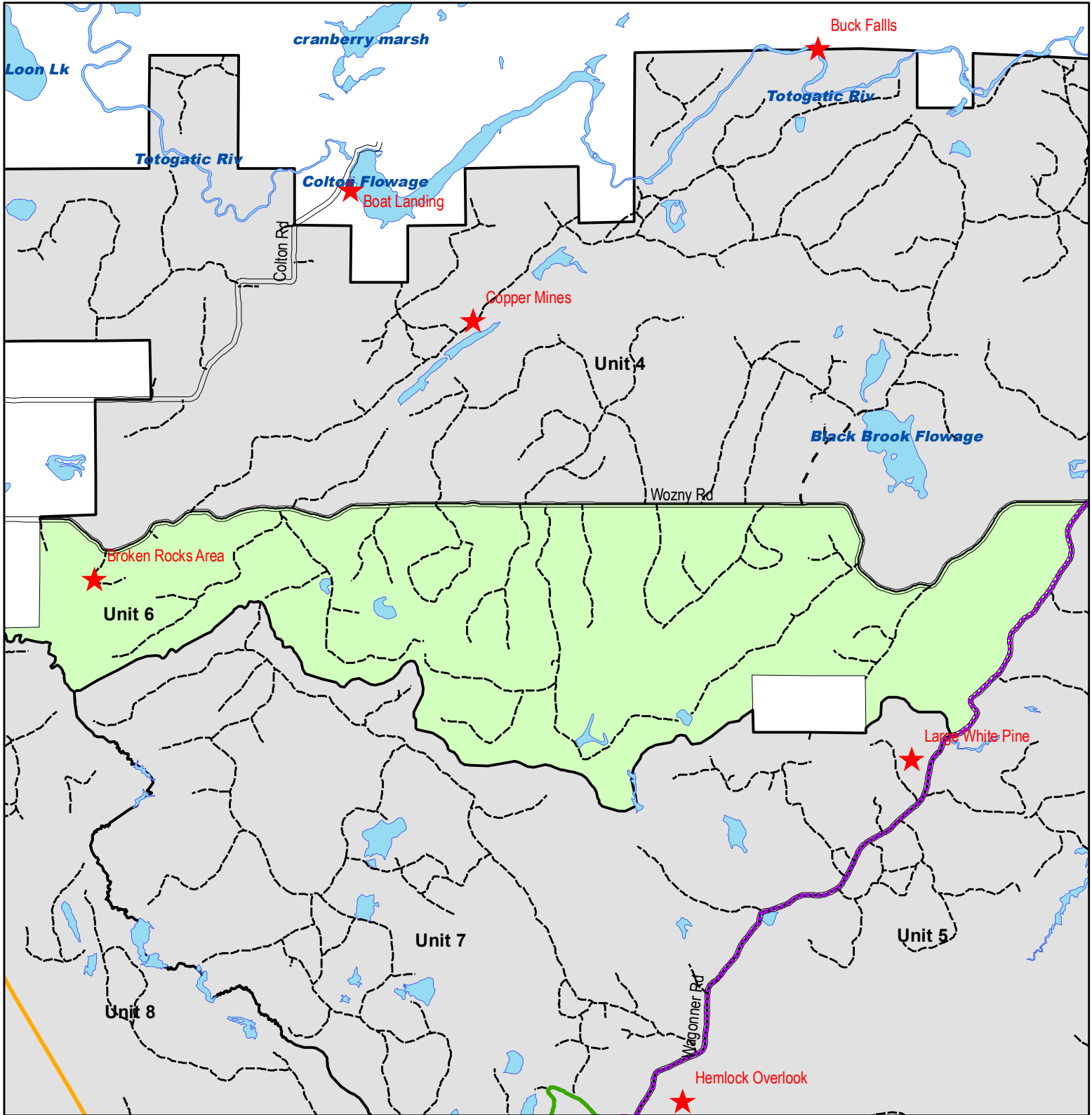


Integrated Resource Management Unit

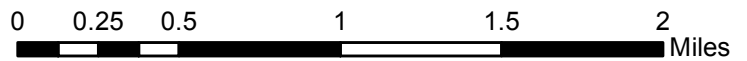
Broken Rocks - Unit 6



Legend

- ★ Points of Interest
- ⋯ ATV Route
- ATV Trail
- ATV/Snowmobile Trail
- - - Snowmobile Club Trail
- ⋯ Snowmobile Route
- Snowmobile Trail
- Utility Corridor (Pipeline, Powerline, Rail)
- - - Forest Trails
- Public Roads**
- State Highway
- County Highway
- Township Road
- County Forest Road
- Water

- ### Forest Unit
- Other Forest Units
 - Unit 6 - Broken Rocks



This map is not a survey of the actual boundary of any property this map depicts. Accuracy is limited by the quality of the public data from which it is derived and is not implied or guaranteed. Washburn County assumes no responsibility for conclusions drawn by the user.

