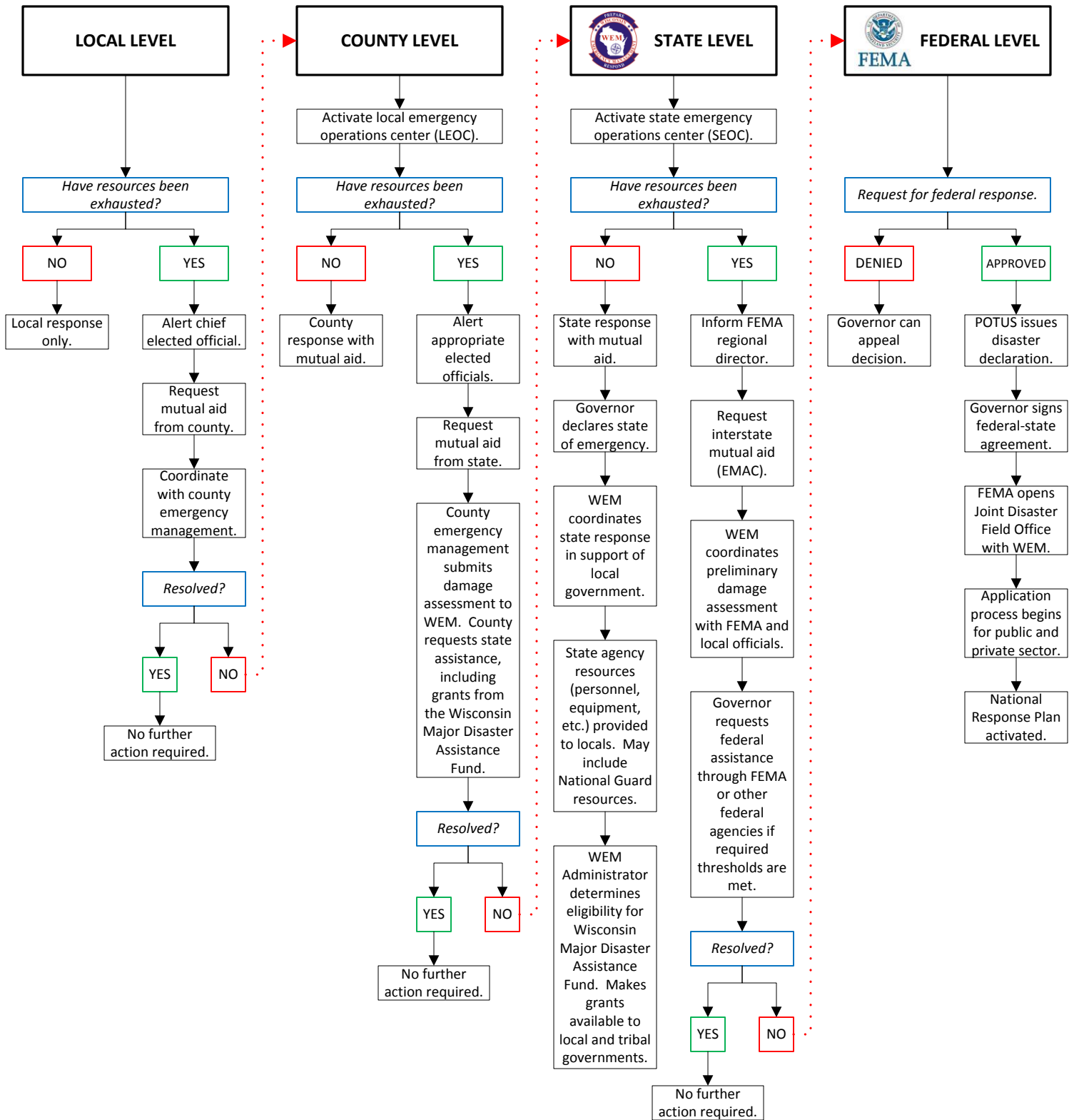


# DISASTER RESPONSE FLOWCHART



# WHO MAY DECLARE A DISASTER?

## 1 VILLAGE OR TOWN

**Governing body** of any Village or Town ss. 323.11 & 323.14(4)(a), Stats.

**Village President**, subject to ratification ss. 61.24 & 61.34, 323.14(4)(b), Stats.

**Town Chairperson**, subject to ratification ss. 60.22, 60.24(1), 323.14(4)(b), Stats.

**Chief Executive Officer**, subject to ratification ss. 60.22, 60.23, & 61.32, 323.14(4)(b), Stats.

Any person, employee, or position empowered and designated by ordinance or resolution.

## 2 CITY

**Governing body** of any City ss. 323.11 & 323.14(4)(a), Stats.

**Mayor**, subject to ratification ss. 323.14(4)(b), 62.09(8), 62.11, 64.29, Stats.

**City Manager**, subject to ratification ss. 64.11 & 323.14(4)(b), Stats.

**Chief Executive Officer**, subject to ratification ss. 62.11 & 323.14(4)(b), Stats.

Any person, employee, or position empowered and designated by ordinance or resolution.

## 3 COUNTY

Majority vote of **County Board** constituting a quorum ss. 59.02, 59.03, 59.04, 323.11, 323.14(4)(a), Stats.

**County Board Chair**, if empowered by ordinance ss. 59.12 & 323.14(4)(b), Stats.

**County Executive**, if empowered by ordinance ss. 59.17(2) & 323.14(4)(a), Stats.

**County Administrator**, if empowered by ordinance ss. 59.18(2) & 323.14(4)(a), Stats.

**County Sheriff**, s. 59.28, Stats.

Any person, employee, or position empowered and designated by ordinance or resolution.

## 4 STATE

**Governor of the State of Wisconsin**, s. 323.10, Stats.

## 5 FEDERAL

**President of the United States**, 42 USC s. 5170 (Et seq.)

**NOTE:** Statute numbers (i.e., 323.11 or 42 USC s. 5170) refer to the Wisconsin Statutes and United States Code, respectively.

## EMERGENCY CONTACT INFORMATION

### 24-Hour Emergency Contact Number

To contact the Wisconsin State Duty Officer, dial (800) 943-0003

### Wisconsin Joint Operations Center (JOC)

To contact the JOC, dial (800) 335-5147 x8400

### Wisconsin Statewide Information Center (WSIC)

To contact the WSIC, dial (888) DCI-WSIC

## GENERAL CONTACT INFORMATION

### Wisconsin Emergency Management (WEM)

Main Telephone: (608) 242-3232

Fax: (608) 242-3247

### Wisconsin Department of Military Affairs (DMA)

Main Telephone: (608) 242-3000

State Legal Office: (608) 242-3072

Judge Advocate General: (608) 242-3077

Fax: (608) 242-3082