

Date: April 24, 2019
To: Emergency Management Director - Carol Buck
From: Stephanie Jentz, Gypsy Moth Public Information Officer
Wisconsin Gypsy Moth Slow the Spread Program (STS)
Subject: Gypsy Moth Spraying - Washburn County

The Wisconsin Gypsy Moth Slow the Spread Program is making plans to aerially spray for gypsy moth in Washburn County this year. Spraying typically starts in May and lasts until late July. Unfortunately, we cannot give you definite dates at this time because our spray schedule depends on weather conditions and gypsy moth development.

We are providing you with information about our plans in case you receive calls from the public about our activities. We will also share this information with municipal officials if a municipality is in a spray area. An informational postcard will be mailed to people living in and around the spray sites in early May.

Please note our toll-free number: 1-800-642-6684, and our e-mail, gypsymoth@wisconsin.gov. Feel free to refer people to call or e-mail us if they have any questions. Additionally, our toll-free line carries a recorded message about our daily spray plans once spraying begins. Throughout the spraying season, we will send an e-mail notification about our spray plans and progress to the local media and those who are interested in receiving information. We will also send you an e-mail on each spray date for your county, informing you of our progress so you will know when we begin and finish. If you would like to be removed from this e-mailing list or have relevant updates or additions for our notification list, please let us know.

We will spray 2,565 total acres in Washburn County at two spray sites. We will be spraying 91 acres of *Bacillus thuringiensis* sub sp. *kurstaki* (Btk) at one site and mating disruptant on a total of 2,474 acres across one site. We have attached a map of treatment areas to this email. You can find more information on the type of product we will be using and general information on the gypsy moth program in the following factsheet links:

[Program Overview](#)

[Gypsy Moth](#)

[Aerial Treatments](#)

[Btk Information](#)

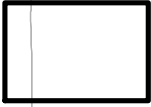
[Mating Disruption Information](#)

Please feel free to share this information with other officials and the public. You also can visit the WI-DATCP gypsy moth [website](#), [Twitter](#), and [Facebook](#) accounts for daily and live updates.

Thank you,

Stephanie Jentz
Gypsy Moth Public Information Officer
Wisconsin Dept. of Agriculture, Trade and Consumer Protection
2811 Agriculture Drive
Madison, WI 53708
(608) 347-1082
Stephanie.Jentz@wisconsin.gov

Washburn County

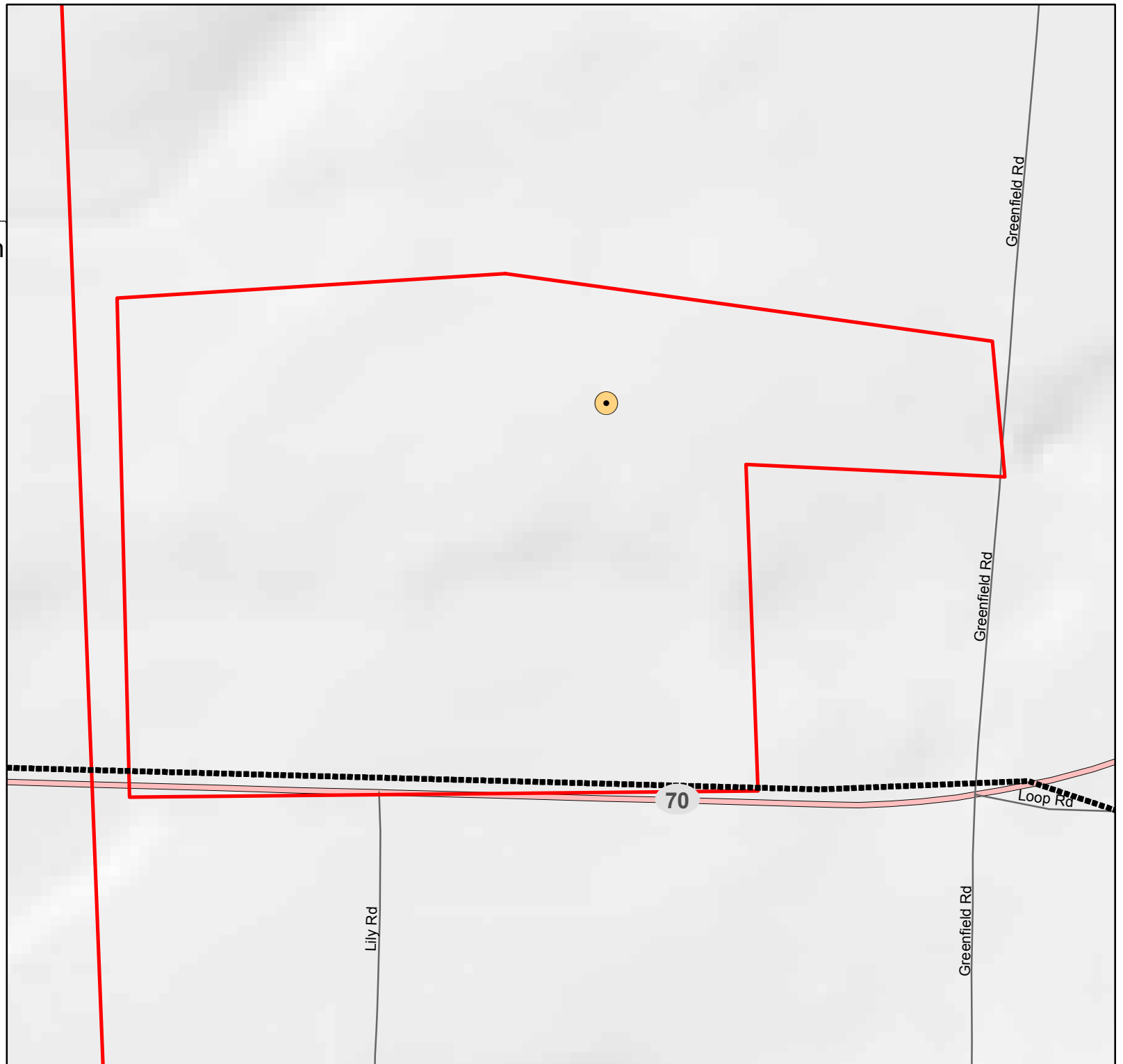
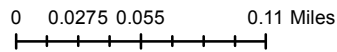


Proposed Gypsy Moth Treatment Site 2019 Washburn 1

Treatment Method:
Bacillus thuringiensis,
kurstaki 24BIUx2

Total Acres: 91

-  Egg Masses
-  Daycare
-  Towers
-  Deer Farm
-  Campground
-  Hospital
-  Organic Farm
-  School
-  Power Line
-  Airport
-  Treatment Sites
-  County Line



Washburn County



Proposed Gypsy Moth Treatment Site 2019 Washburn11

Treatment Method:
Bacillus thuringiensis,
kurstaki 24BIUx2

Total Acres: 2474

- Egg Masses
- Daycare
- Towers
- Deer Farm
- Campground
- Hospital
- Organic Farm
- School
- Power Line
- Airport
- Treatment Sites
- County Line

