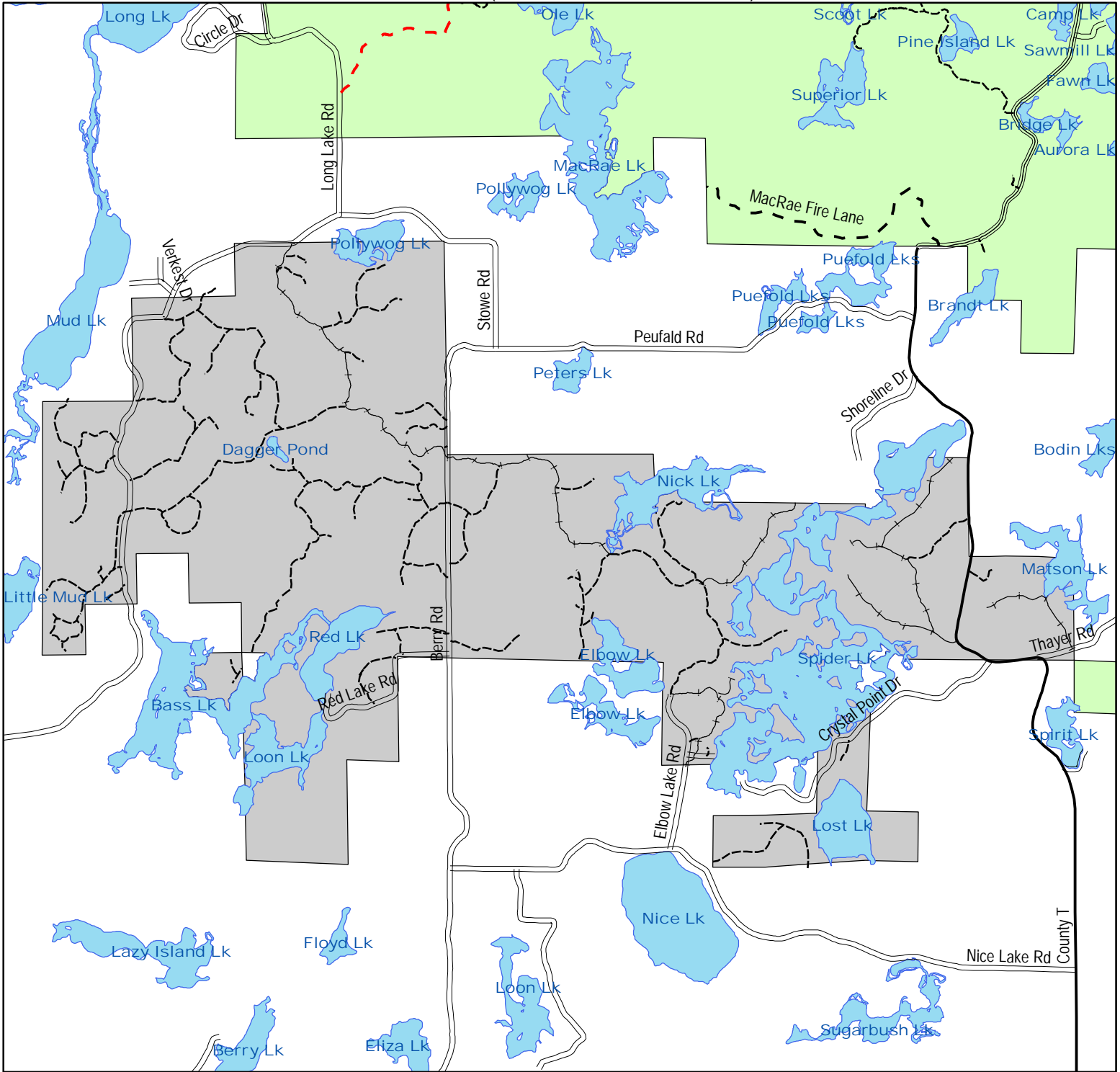


Integrated Resource Management Unit

Long Lake - Unit 27a

Established roads and trails open to motor vehicles unless otherwise signed, bermed or gated.
(see back for more information)



Legend

Forest trails open to motorized use

- Trail open to cars, trucks, ATV and Snowmobile
- - - Open to cars, trucks, ATV and Snowmobile / Snowmobile & ATV only Dec 1 - April 1
- Open to motor vehicles under 900 pounds (ATV)
- Open to motor vehicles under 900 pounds (ATV, snowmobile) Dec 1 - April 1

Public Roads

- - - County Forest Road
- County Highway
- Municipal Street
- - - Proposed County Forest Road
- ▬ State Highway
- Township Road

- Streams
- Water

Motorized Access Classification

- ▬ Closed to motorized use except designated ATV/Snowmobile trails
- ▬ Moderately open to motorized use (see individual unit maps for listing of roads open)
- ▬ Open to motorized use only on established roads and trails
- ▬ Other Forest Units

