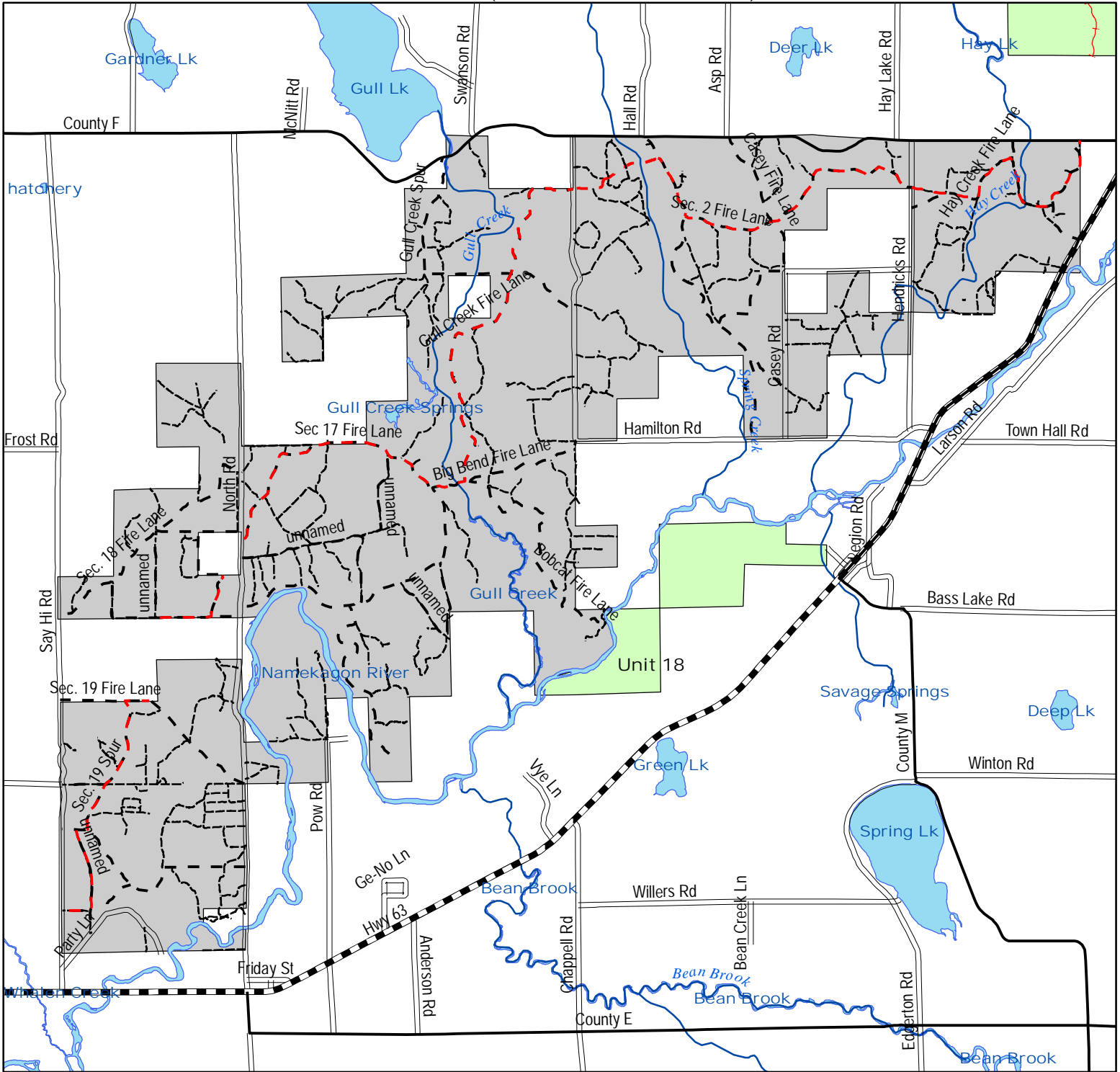


# Integrated Resource Management Unit

## Springbrook - Unit 17

Established roads and trails open to motor vehicles unless otherwise signed, bermed or gated.  
(see back for more information)



### Legend

#### Forest trails open to motorized use

- Trail open to cars, trucks, ATV and Snowmobile
- - - Open to cars, trucks, ATV and Snowmobile / Snowmobile & ATV only Dec 1 - April 1
- Open to motor vehicles under 900 pounds (ATV)
- Open to motor vehicles under 900 pounds (ATV, snowmobile) Dec 1 - April 1

#### Public Roads

- - County Forest Road
- County Highway
- Municipal Street
- - - Proposed County Forest Road
- State Highway
- Township Road

Streams

Water

#### Motorized Access Classification

- Closed to motorized use except designated ATV/Snowmobile trails
- Moderately open to motorized use (see individual unit maps for listing of roads open)
- Open to motorized use only on established roads and trails
- Other Forest Units

