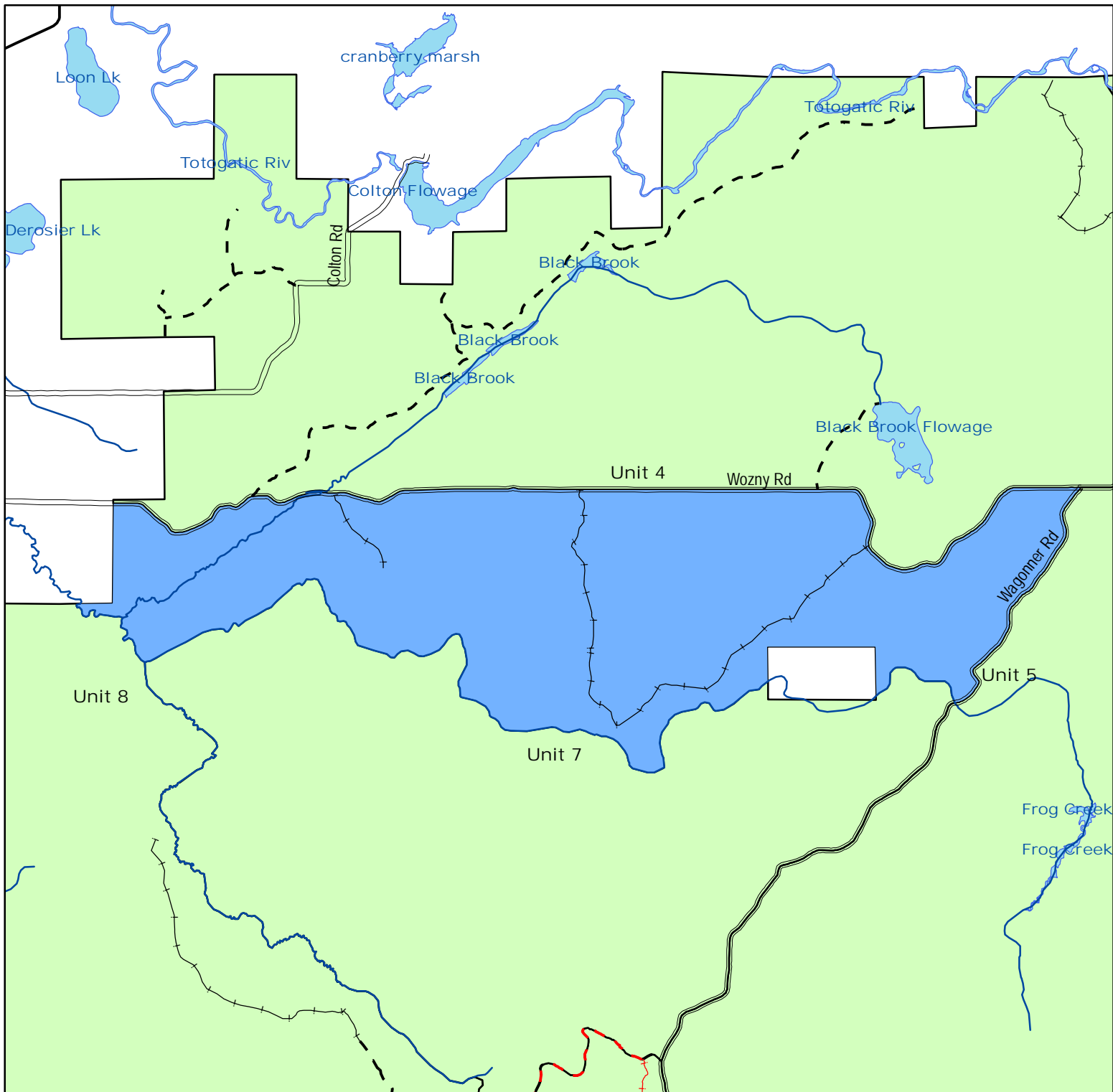


Integrated Resource Management Unit
 Broken Rocks - Unit 6
 Only designated trails open to motor vehicles (see back for more information)



Legend

Forest trails open to motorized use

- - - Trail open to cars, trucks, ATV and Snowmobile
- - - Open to cars, trucks, ATV and Snowmobile / Snowmobile & ATV only Dec 1 - April 1
- |—| Open to motor vehicles under 900 pounds (ATV)
- |—| Open to motor vehicles under 900 pounds (ATV, snowmobile) Dec 1 - April 1

Public Roads

- - - County Forest Road
- County Highway
- Municipal Street
- - - Proposed County Forest Road
- = State Highway
- = Township Road

- Streams
- Water

Motorized Access Classification

- Closed to motorized use except designated ATV/Snowmobile trails
- Moderately open to motorized use (see individual unit maps for listing of roads open)
- Open to motorized use only on established roads and trails
- Other Forest Units

