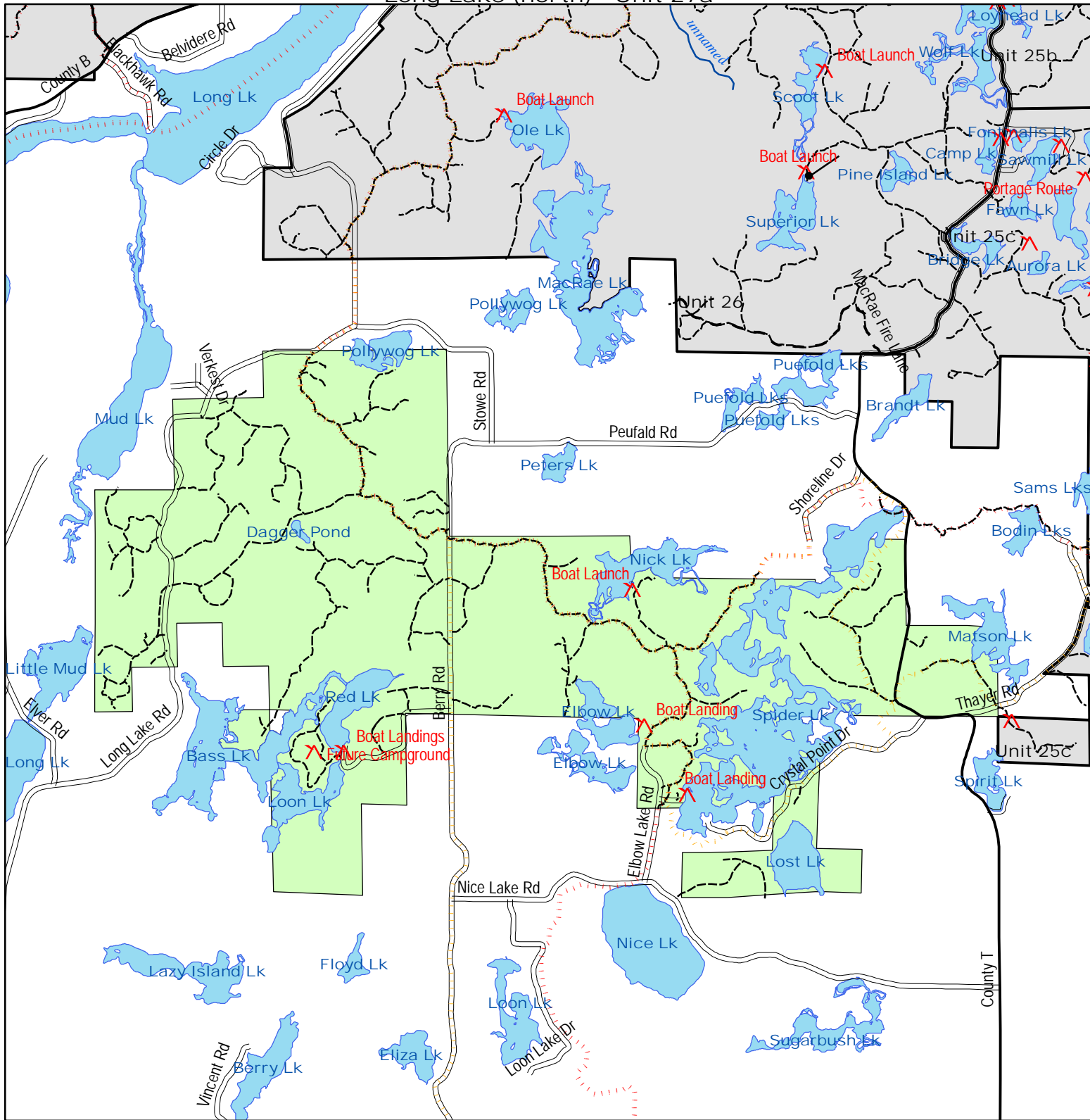


# Integrated Resource Management Unit Long Lake (north) - Unit 27a



**Legend**

<ul style="list-style-type: none"> <li><span style="color: red;">↗</span> Points of Interest</li> <li><span style="color: orange;">- - - -</span> Spider Lake ATV/Snowmobile Trails</li> <li><span style="color: black;">- - - -</span> Forest Trails</li> <li><span style="color: red;">- - - -</span> Snowmobile Trails</li> </ul>	<p><b>Public Roads</b></p> <p><b>TYPE</b></p> <ul style="list-style-type: none"> <li><span style="color: black;">- - - -</span> County Forest Road</li> <li><span style="color: black;">—</span> County Highway</li> <li><span style="color: black;">—</span> Municipal Street</li> <li><span style="color: black;">- - - -</span> Proposed County Forest Road</li> <li><span style="color: black;">▬</span> State Highway</li> <li><span style="color: black;">—</span> Township Road</li> <li><span style="color: blue;">—</span> Streams</li> <li><span style="color: blue;">■</span> Water</li> </ul>	<p><b>Forest Unit</b></p> <ul style="list-style-type: none"> <li><span style="color: grey;">■</span> Other Forest Units</li> <li><span style="color: green;">■</span> Unit 27a - Long Lake (north)</li> </ul>	<p>0 0.25 0.5 1 1.5 2 Miles</p>
--	---	---	---------------------------------