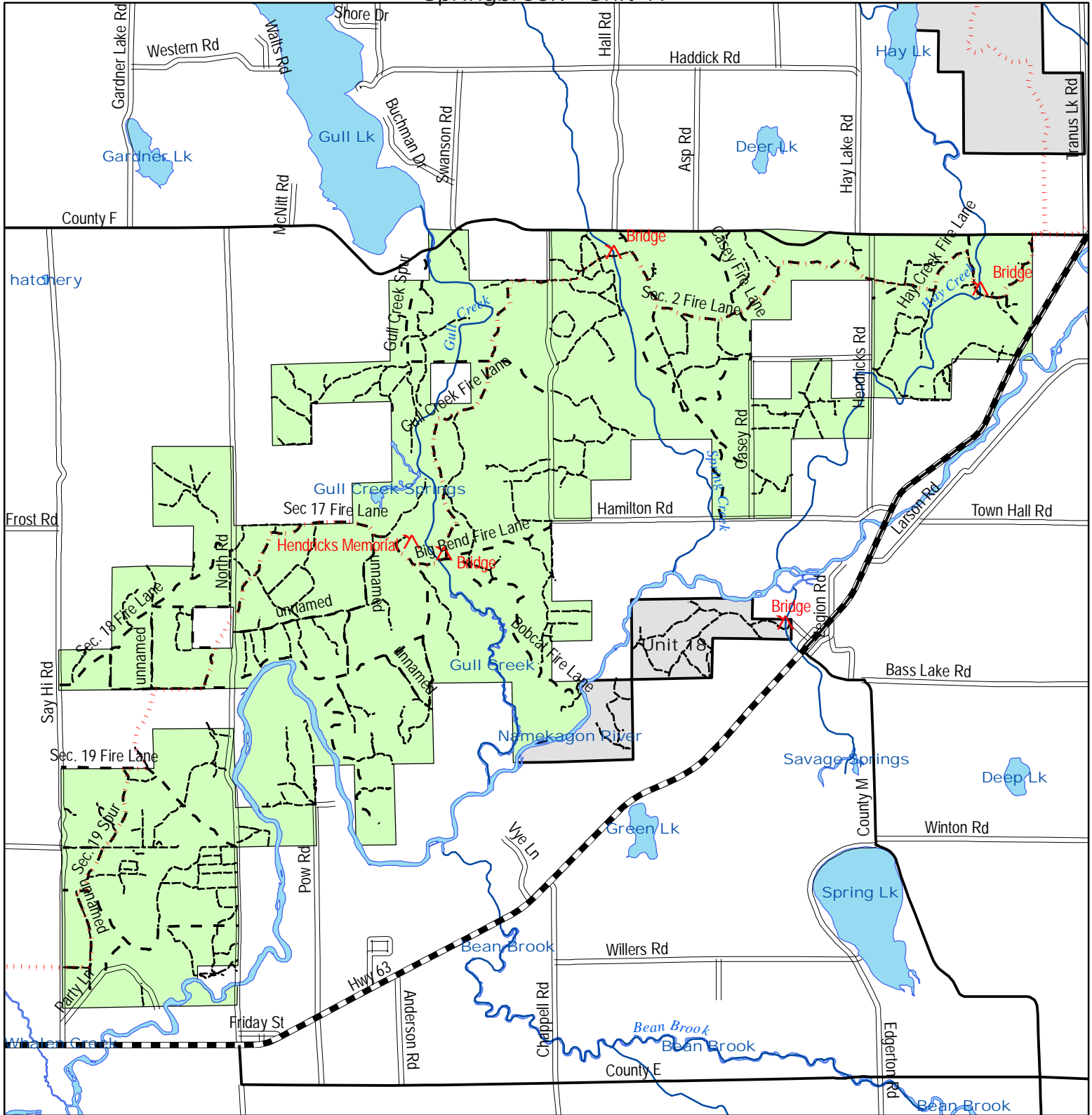


Integrated Resource Management Unit Springbrook - Unit 17



Legend

- | | | |
|----------------------------|-----------------------------|-----------------------|
| Points of Interest | Public Roads | Forest Unit |
| Wild River Multi-Use Trail | TYPE | Other Forest Units |
| Snowmobile Trails | County Forest Road | UNIT |
| Forest Trails | County Highway | Unit 17 - Springbrook |
| | Municipal Street | |
| | Proposed County Forest Road | |
| | State Highway | |
| | Township Road | |
| | Streams | |
| | Water | |

