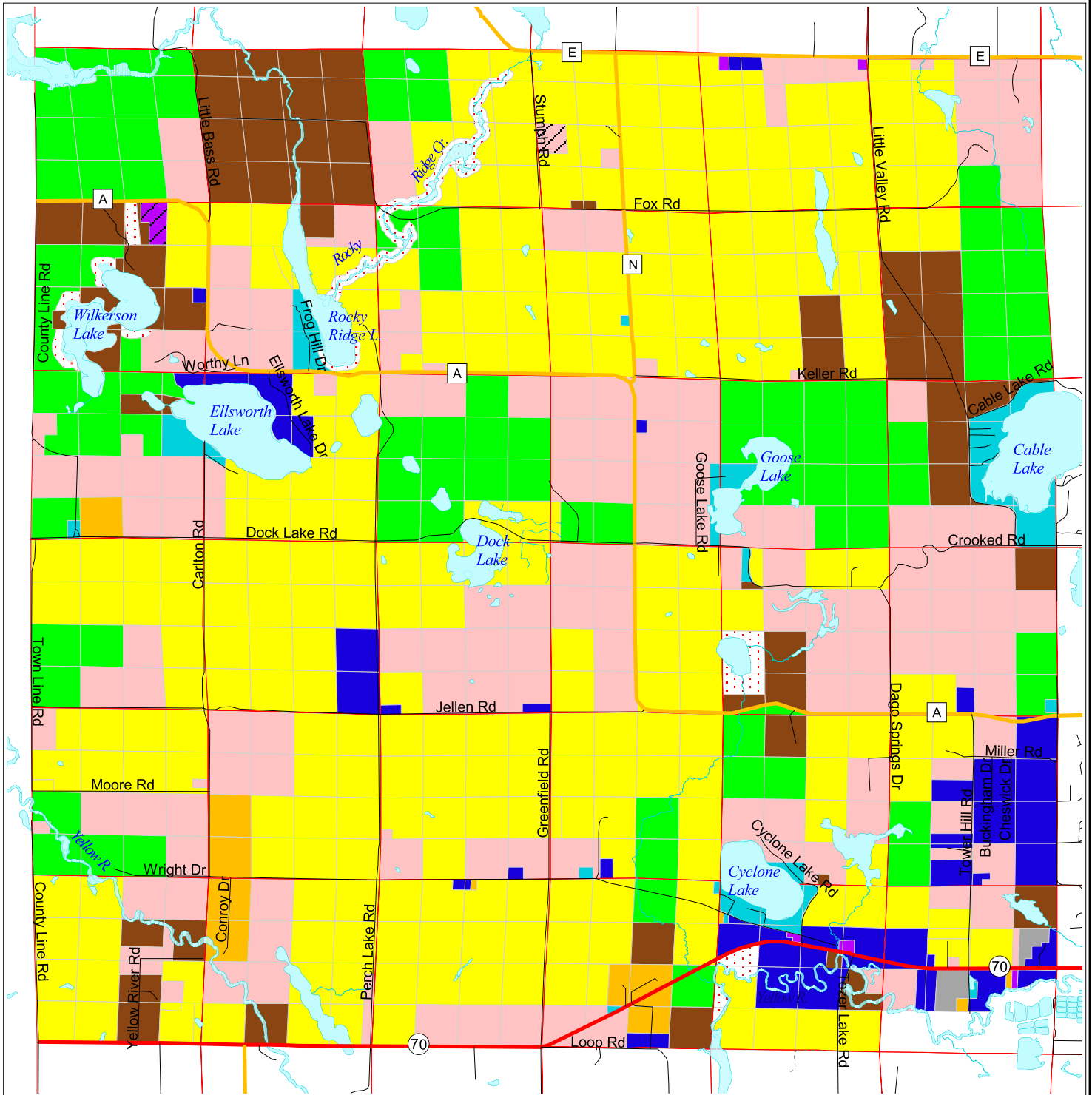


Zoning - Town of Evergreen



Zoning Districts

- Federal Highways
- State Highways
- County Roads
- Local Roads
- Water Features
- Section Lines

- Residential
- Residential Agricultural
- Residential Mobile
- Residential Recreational (2)
- Residential Recreational (1)
- Residential Shorelands
- Commercial

- Commercial Highway
- Agricultural
- Forestry
- Planned Unit Development
- Resource Conservation
- Indicates zoning w/Conditions



Source: Washburn Co. Zoning Department; Northwest RPC.

NOTE:
The boundary of the Resource Conservation District in sections 4, 7, 8, & 9 shall be the junction of the wetlands with continuous high ground.

NOTE: This map is NOT an official zoning map. This map is intended for general and informational use only. For more specific information, please contact the Washburn County Zoning Department.