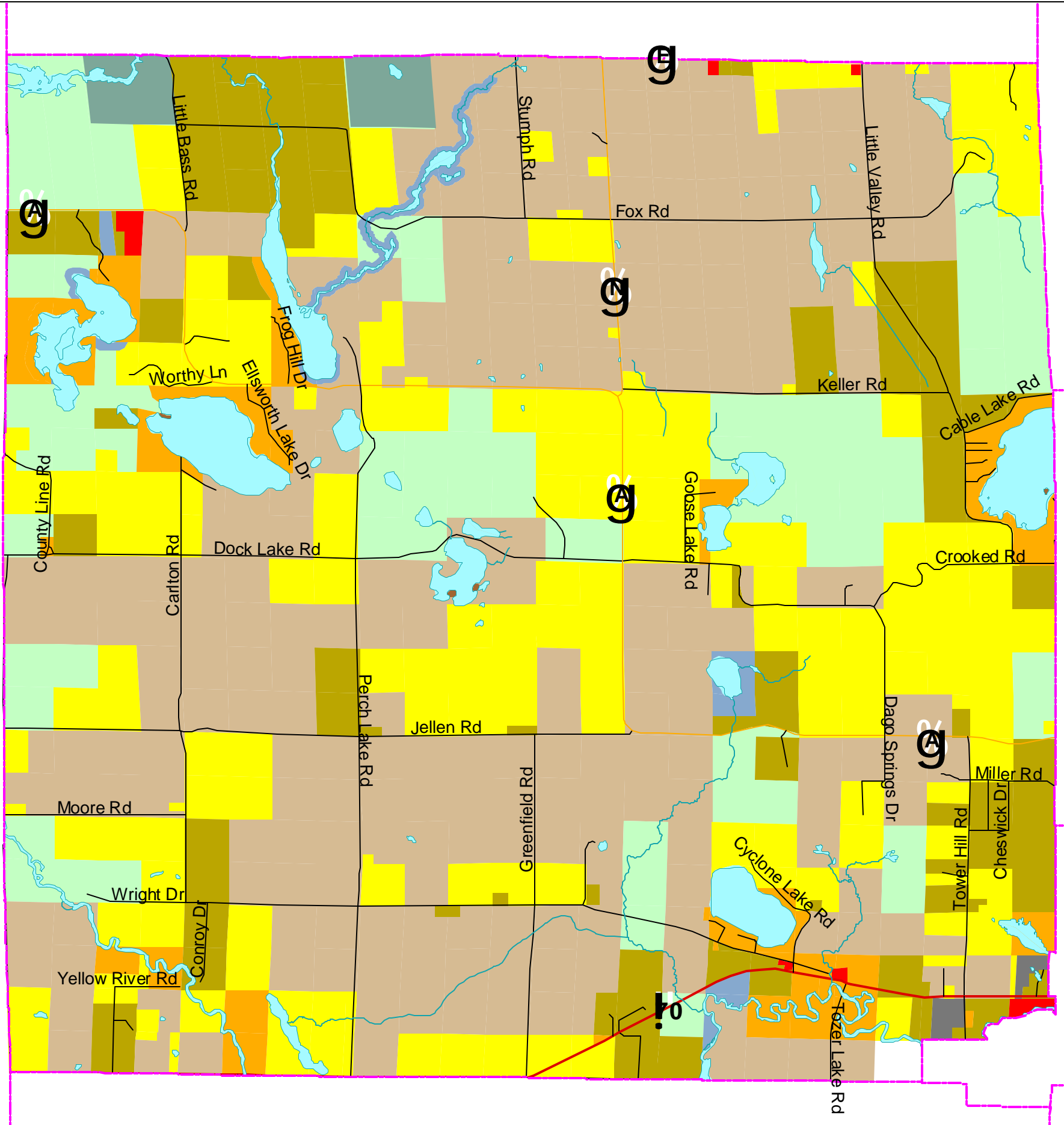
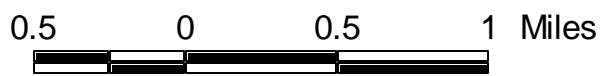
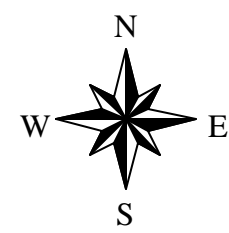


Future Land Use Town of Evergreen



	Federal Highway		Forestry Residential
	State Highway		Rural Residential
	County Highway		Shoreland Residential
	Local Road		Medium Den. Residential
	Private/Trail		Unincorporated Communities
	Town Boundary		Commercial
	Lakes & Ponds		Industrial
	Rivers & Streams		Governmental/Institutional
	DNR Land		Park & Recreation
	County Forest Land		Agriculture
	Federal Land		Forestry
	Industrial Forest		Conservancy



Source: Northwest Regional
Planning Commission
Date Printed: 4/6/04

