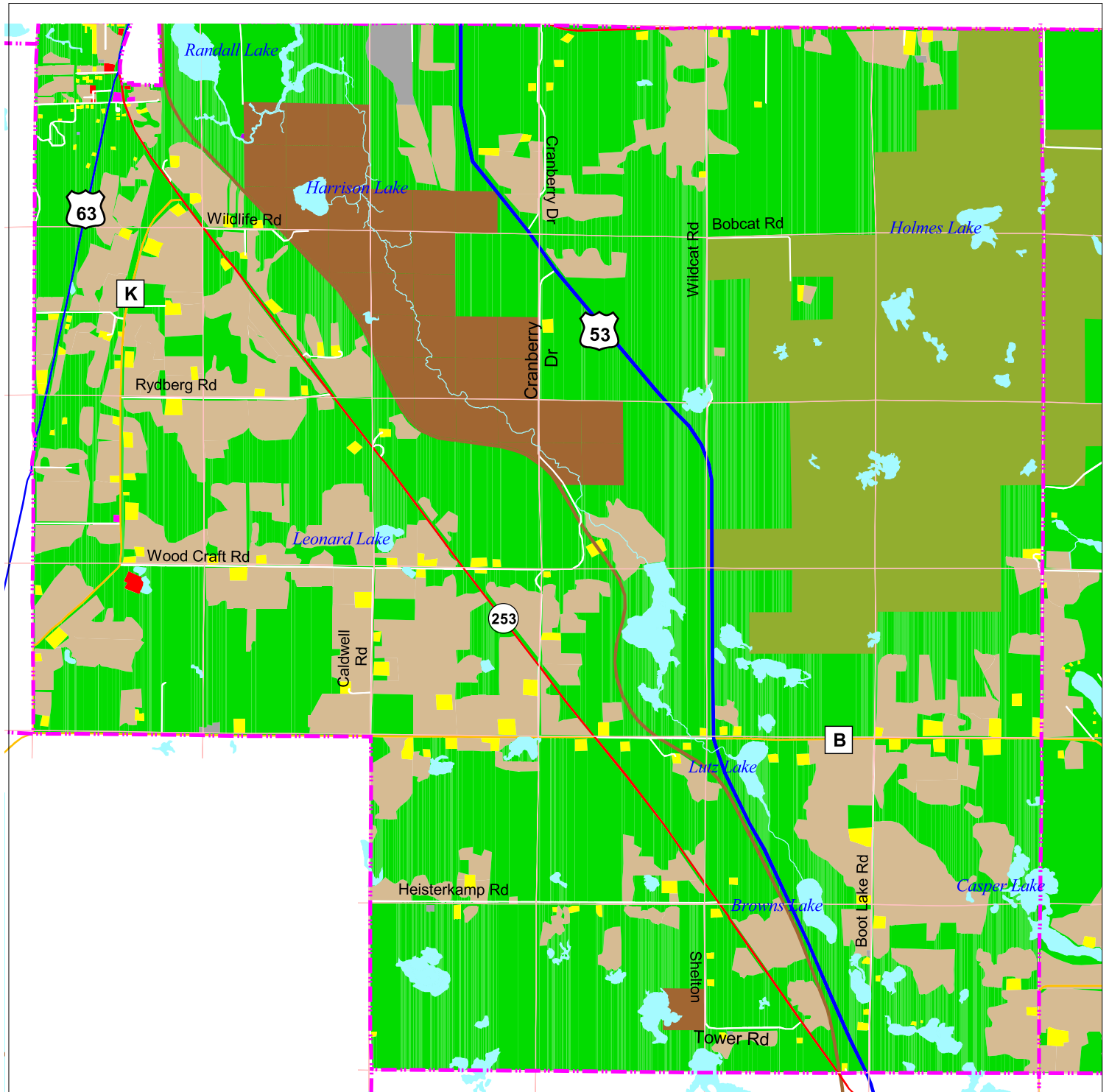


# Generalized Existing Land Use Town of Beaver Brook



Land use was taken from 1996 aerial photographs and updated by local citizens

- |                  |                                 |                   |
|------------------|---------------------------------|-------------------|
| Federal Highways | Residential                     | Federal Lands     |
| State Highways   | Mobile Home Park                | Industrial Forest |
| County Roads     | Commercial                      | County Forest     |
| Local Roads      | Industrial                      | State Land        |
| Town Boundary    | Communication/Utilities         |                   |
| Lakes            | Governmental/Institutional      |                   |
| Rivers & Streams | Park & Recreation               |                   |
|                  | Agriculture/Open Space          |                   |
|                  | Woodlands & Other Natural Areas |                   |

