

WASHBURN COUNTY FOREST COMPREHENSIVE LAND USE PLAN

CHAPTER 4000 – ROAD AND ACCESS PLAN UNITS AND REGULATIONS

TABLE OF CONTENTS

4000 [ROAD AND ACCESS PLAN](#)..... 4000-3

4000.1 [BACKGROUND](#)..... 4000-3

4000.2 [REGULATIONS APPLYING TO ALL UNITS](#)..... 4000-4

4000.3 [TYPES OF MOTOR VEHICLE USES PERMITTED](#)..... 4000-4

4000.3.1 [Roads Open to ATV/UTV/, Cars, Trucks](#)..... 4000-4

4000.3.2 [Roads Open to ATV/UTV, Cars, Trucks Except Winter](#)..... 4000-5

4000.3.3 [Roads Open to ATV/UTV](#)..... 4000-5

4000.3.4 [Roads Open to ATV/Snowmobile During Winter Only](#)..... 4000-5

4000.3.5 [Exempted Uses](#)..... 4000-6

4000.3.6 [Plan Implementation](#)..... 4000-6

4000.4 [OVERVIEW MAP](#)..... 4000-7

4000.5 [UNIT MAPS](#)..... 4000-9

4000.5.1 [UNIT #1 – FLOWAGE UNIT](#)..... 4000-9

4000.5.2 [UNIT #2 – TOTOGATIC UNIT](#)..... 4000-11

4000.5.3 [UNIT #3 – WAGGONER UNIT](#)..... 4000-13

4000.5.4 [UNIT #4 – SILENT WOOD](#)..... 4000-15

4000.5.5 [UNIT #5 – STANBERRY UNIT](#)..... 4000-17

4000.5.6 [UNIT #6 – GARDNER UNIT](#)..... 4000-19

4000.5.7 [UNIT #7 – STUNTZ BROOK UNIT](#)..... 4000-21

4000.5.8 [UNIT #8 – MCKENZIE UNIT](#)..... 4000-23

4000.5.9 [UNIT #9 – NAMEKAGON UNIT](#)..... 4000-25

4000.5.10 [UNIT #10 – DUGAN UNIT](#)..... 4000-27

4000.5.11 [UNIT #11 – FENANDER UNIT](#)..... 4000-29

4000.5.12 [UNIT #12 – HARMON UNIT](#)..... 4000-31

4000.5.13 [UNIT #13 – SAWMILL UNIT](#)..... 4000-33

4000.5.14 [UNIT #14 – SPIDER LAKE](#)..... 4000-35

4000.5.15 [UNIT #15 – WELSH LAKE](#)..... 4000-37

Approved by Washburn County Board of Supervisors October 19, 2021

No Revisions

4000 ROAD AND ACCESS PLAN

4000.1 BACKGROUND

Background information on the Washburn County Forest Road and Access Plan is included in Chapter 700, Section 755 and 760. The objective for the Road and Access Plan is to provide a balance between motorized and non-motorized uses on the Forest while protecting the resource from environmental damage.

While the framework for the Road and Access Plan is established in Chapter 700, This Chapter is intended to provide for the documentation of forest roads that are open to public motorized uses as well as rules and restrictions for motorized uses in general.

The Road and Access Plan uses the Integrated Resource Management Unit boundaries as established in Chapters 800 and 3000. The Forestry, Parks and Recreation Committee has authority to make certain changes to permitted public motorized uses as described in Section 760.3. Committee authorized changes that fall within the scope of 760.3 may be made and subsequent edits to the individual unit maps contained within this Chapter without requiring full County Board approval of a Plan amendment.

The maps contained within this Chapter are considered the official record of public motor vehicle uses that are permitted on the Forest.

4000.2 REGULATIONS APPLYING TO ALL UNITS

There are certain ordinances and other rules that apply to all areas of the County Forest.

These regulations are to be included on the back side of each Road and Access Unit map that is made available to the public. The general text of which is as follows:

1. *Off trail vehicle use is not permitted anywhere. Cross-country travel off of a trail designated open is prohibited.*
2. *No motorized vehicles are allowed on roads or trails with earthen berms, piled logging debris, or gates, even if signs are missing and berms damaged. Please note that certain trails are gated and allow motor vehicle travel under certain weight limits. These gates are posted with a sign prohibiting motor vehicle travel over a weight designated by ordinance.*
3. *No two-wheeled motorized vehicles are allowed on the County Forest. State licensed motorcycles are permitted to travel on State funded County Forest Roads. These roads are indicated in the plat book as a solid dashed line.*

4. No organized motor vehicle events are allowed on the County Forest (races, derbies etc.)
5. No ATV/UTV use is allowed between April 1st through the first Friday before Memorial Weekend, or at any time when D.N.R. fire danger is posted in very high classification or higher. The Forest Administrator is authorized to establish an earlier trail opening if trail conditions and wild fire risk warrant.

THE COUNTY FOREST IS DIVIDED INTO THREE ACCESS REGULATION TYPES

1. OPEN UNITS – GENERALLY GRAY MAP BACKGROUND:

Least amount of access restrictions. Roads and trails are open to vehicle travel unless otherwise signed, bermed, blocked, or gated. These areas are generally restricted to motor vehicles under 10,000 lb. Please note that trails of a sensitive nature have been blocked and motorized travel is prohibited.

2. INTERMEDIATE UNITS – GENERALLY BLUE MAP BACKGROUND:

Intermediate restrictions on vehicle travel. All roads and trails are closed except for those designated open. Individual unit maps designate which trails are open to travel. Open roads may have restrictions as to the type of travel allowed. Roads have been designated open to establish a two-mile road density. Each open road is within a 1 mile walking distance.

3. PRIMITIVE UNITS – GENERALLY LIGHT RED OR PINK MAP BACKGROUND:

Most restrictive. No motor vehicle travel is allowed in the area. Certain exceptions are allowed especially designated recreation trails authorized within the County Forest Plan.

4000.3 TYPES OF MOTOR VEHICLE USES PERMITTED

These Road and Access Plan maps include a legend depicting the types of public motorized uses that are permitted on the Forest as follows:

Legend

Access Type

- - - Open to ATV/UTV, cars, trucks
- - - Open ATV/UTV, cars, trucks except winter (snow trail)
- Open to ATV/UTV
- Open to ATV/Snowmobile during winter only

ATV's and UTVs are defined in Sections 715.2.3 and 715.2.4

4000.3.1 Roads Open to ATV/UTV/, Cars, Trucks

Roads depicted as a black dashed line are generally considered as open to most public motorized vehicle uses. These vehicles, however, must be under 10,000 pounds and either licensed as a highway vehicle (cars, pickups, etc.) or registered as a recreation vehicle with the State of Wisconsin (ATV/UTV, snowmobile). For certain non-resident recreational vehicles, a trail pass will also qualify the machine for use. 2-wheeled motorized travel is not permitted unless the machine is a street legal, licensed motorcycle operating on a gas tax road.

4000.3.2 Roads Open to ATV/UTV, Cars, Trucks Except Winter

Roads depicted as a red dashed line include the same regulations as indicated in Section 4000.3.1, with the exception that cars and trucks are not permitted during winter months when snowmobile trails are actively being maintained or the trail systems are officially open. These may or may not permit UTV use during those time periods depending on the specific circumstances.

4000.3.3 Roads Open to ATV/UTV

Roads depicted as a solid black line with interspersed black dots are considered open to ATVs, UTVs, and snowmobiles. Machines must be registered or have a qualifying trail pass to operate on the Forest. Machines that have been modified after registration in a manner that makes the machine ineligible for registration are not permitted. Many of these roads are also official trail systems.

4000.3.4 Roads Open to ATV/Snowmobile During Winter Only

Roads depicted as a solid red line with interspersed red dots are considered open to ATVs and snowmobiles during winter months only. These generally do not permit UTV use since they are usually winter snowmobile trails and the wider UTV stance presents a hazard to snowmobile riders.

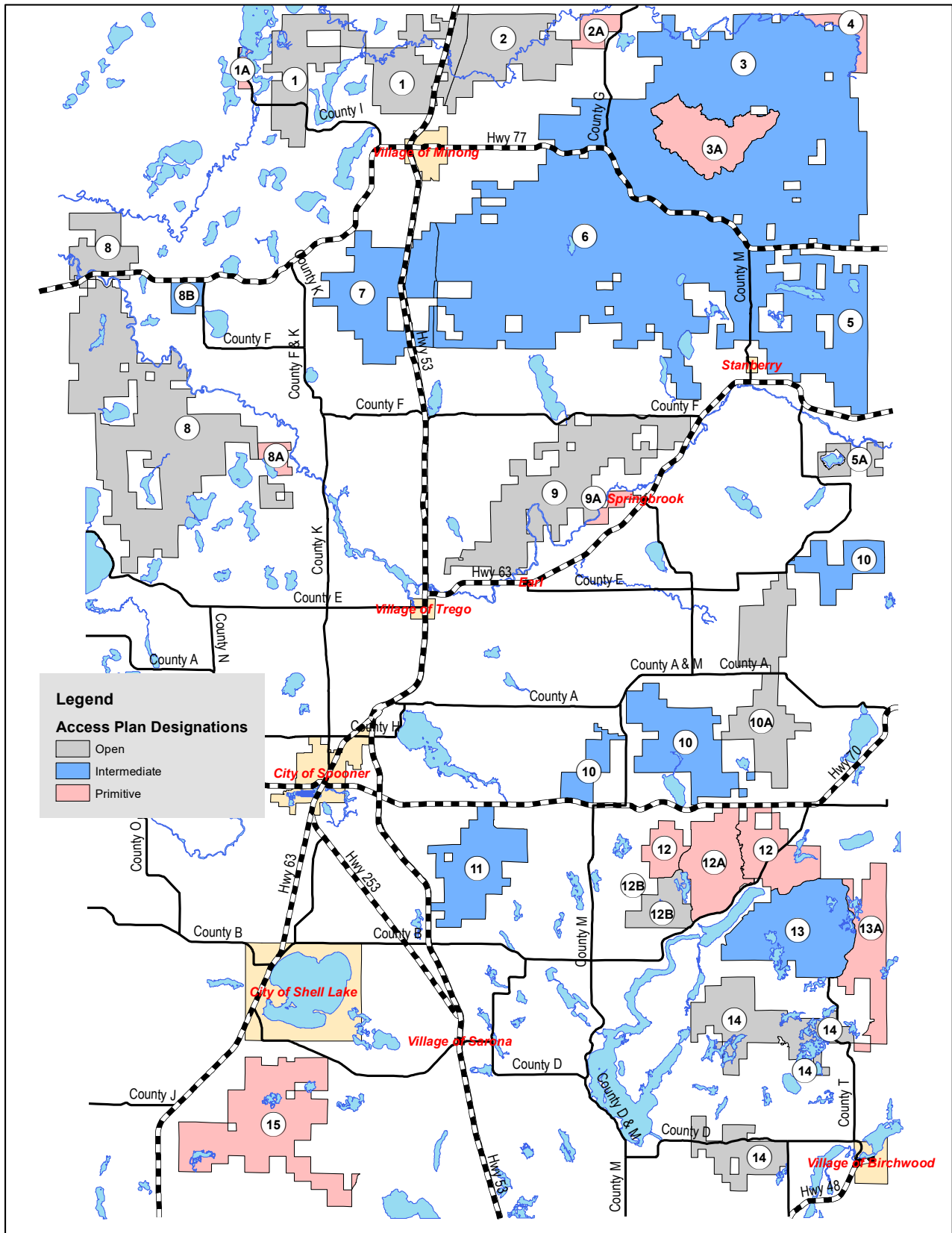
4000.3.5 Exempted Uses

Operation of motor vehicles by County and DNR staff for official purposes is exempt from Road and Access Plan regulations. Machinery operating under contract with Washburn County (timber contractors, recreational trail clubs, etc.) is also exempt.

4000.3.6 Plan Implementation

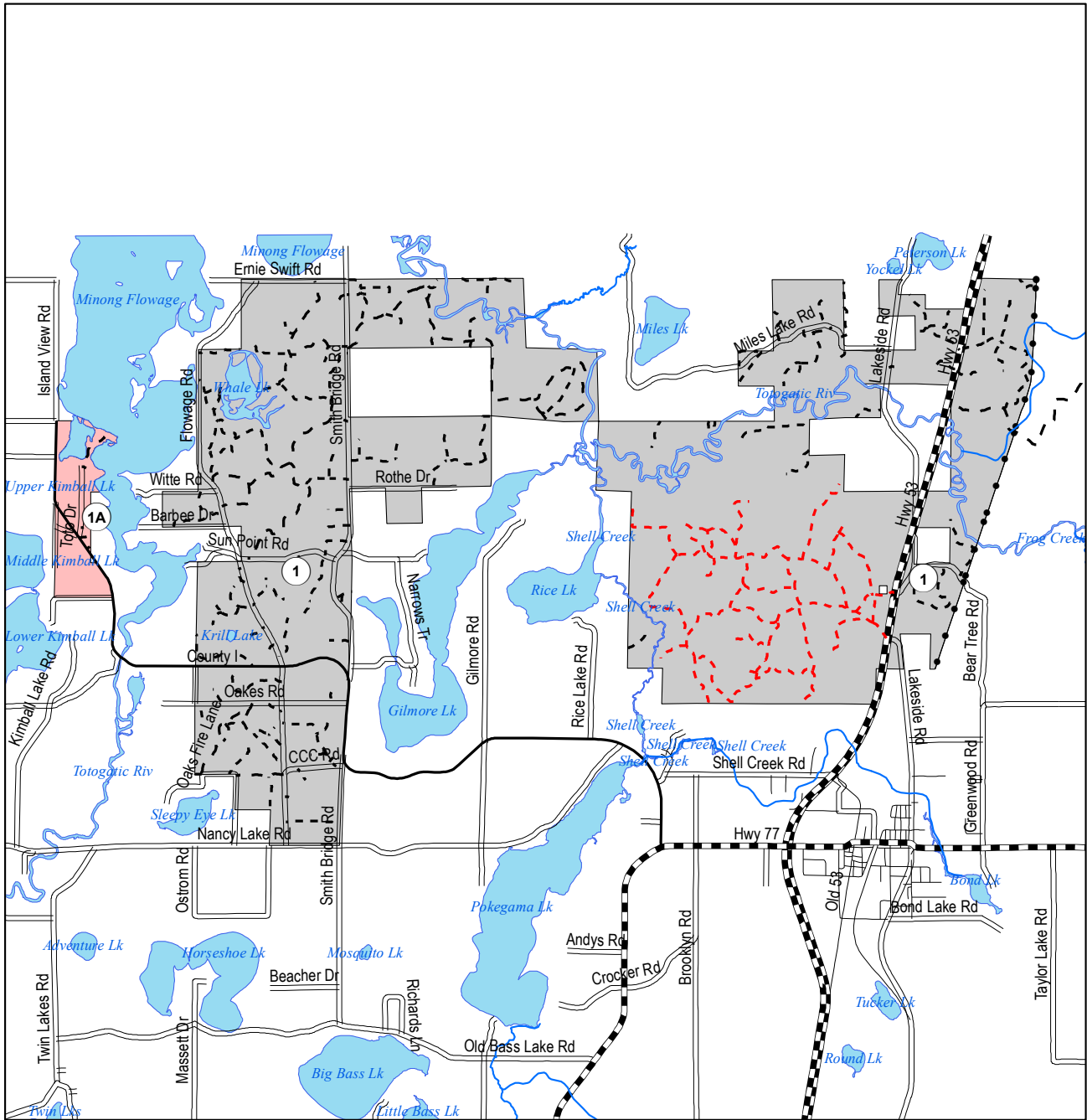
There are components to the 2021-2035 Washburn County Forest Road and Access Plan that include substantial changes from the prior Plan. Upon adoption of the 2021-2035 Washburn County Forest Comprehensive Land Use Plan by the Washburn County Board of Supervisors, the 2006-2020 Road and Access Plan regulations will remain in place until it is determined by the Forestry, Parks and Recreation Committee that gates, berms and/or signs have been removed, replace, and/or installed to provide for appropriate “on the ground” notification to the public of changes to road classifications. The approvals may be made over time and on a unit by unit basis if necessary.

4000.4 ROAD AND ACCESS PLAN UNIT DESIGNATION MAP



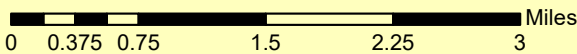
Washburn County Forest - Road and Access Plan Unit 1: Flowage Unit and Totogatic Park Sub-Unit (1A)

See back page for more information



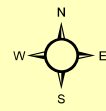
Legend

- Primitive Unit - Closed to Public Motor Vehicle Use, unless mapped
- Intermediate Unit - Only mapped roads open to public motorized use
- Open Unit - Open to public motorized use unless otherwise signed, gated or bermed



Access Type

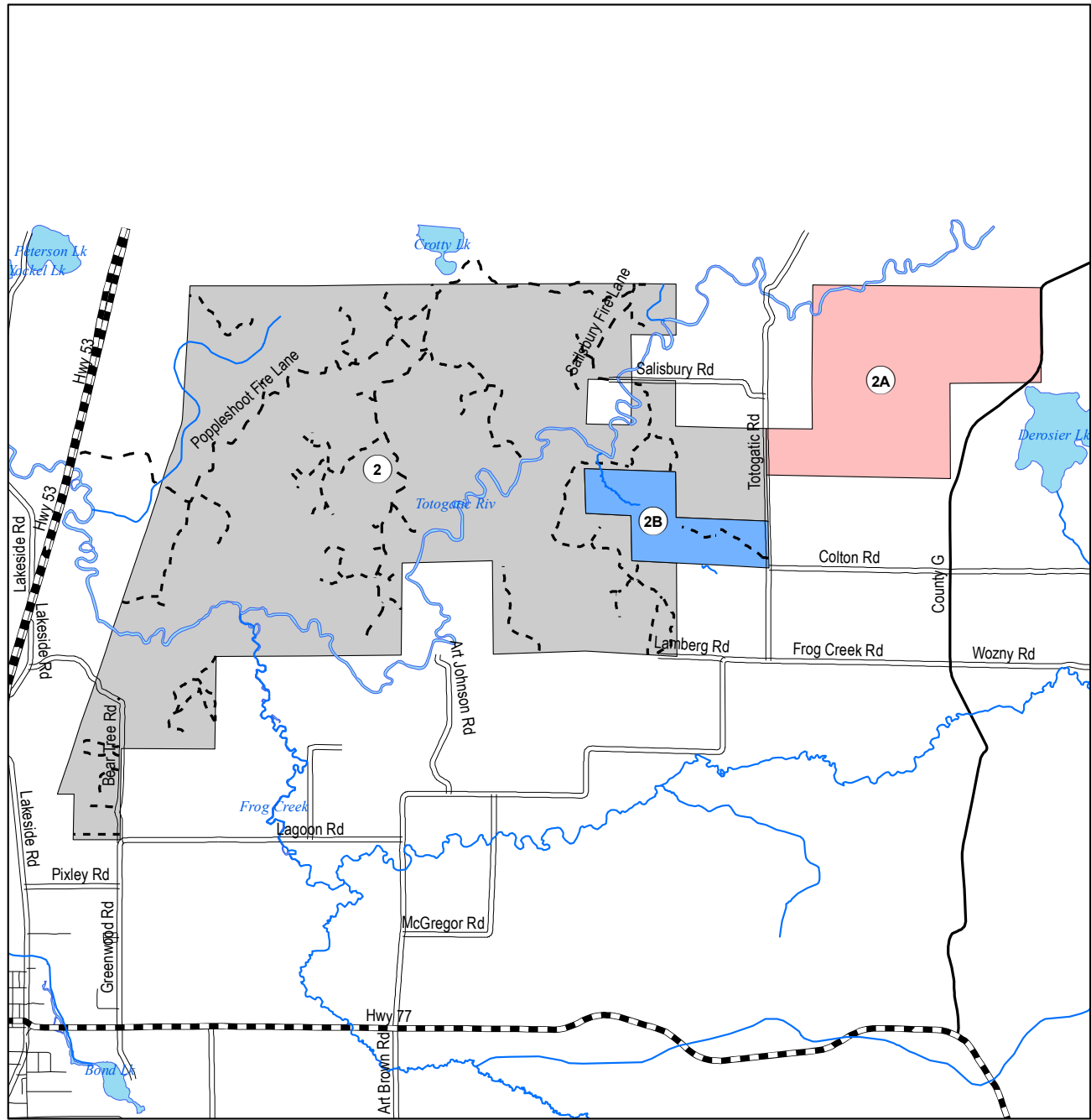
- Open to ATV/UTV, cars, trucks
- Open ATV/UTV, cars, trucks except winter (snow trail)
- Open to ATV/UTV
- Open to ATV during winter only



Washburn County Forest - Road and Access Plan

Unit 2: Totogatic Unit, Derosier (2A) and Wolf Springs (2B) Sub-Units

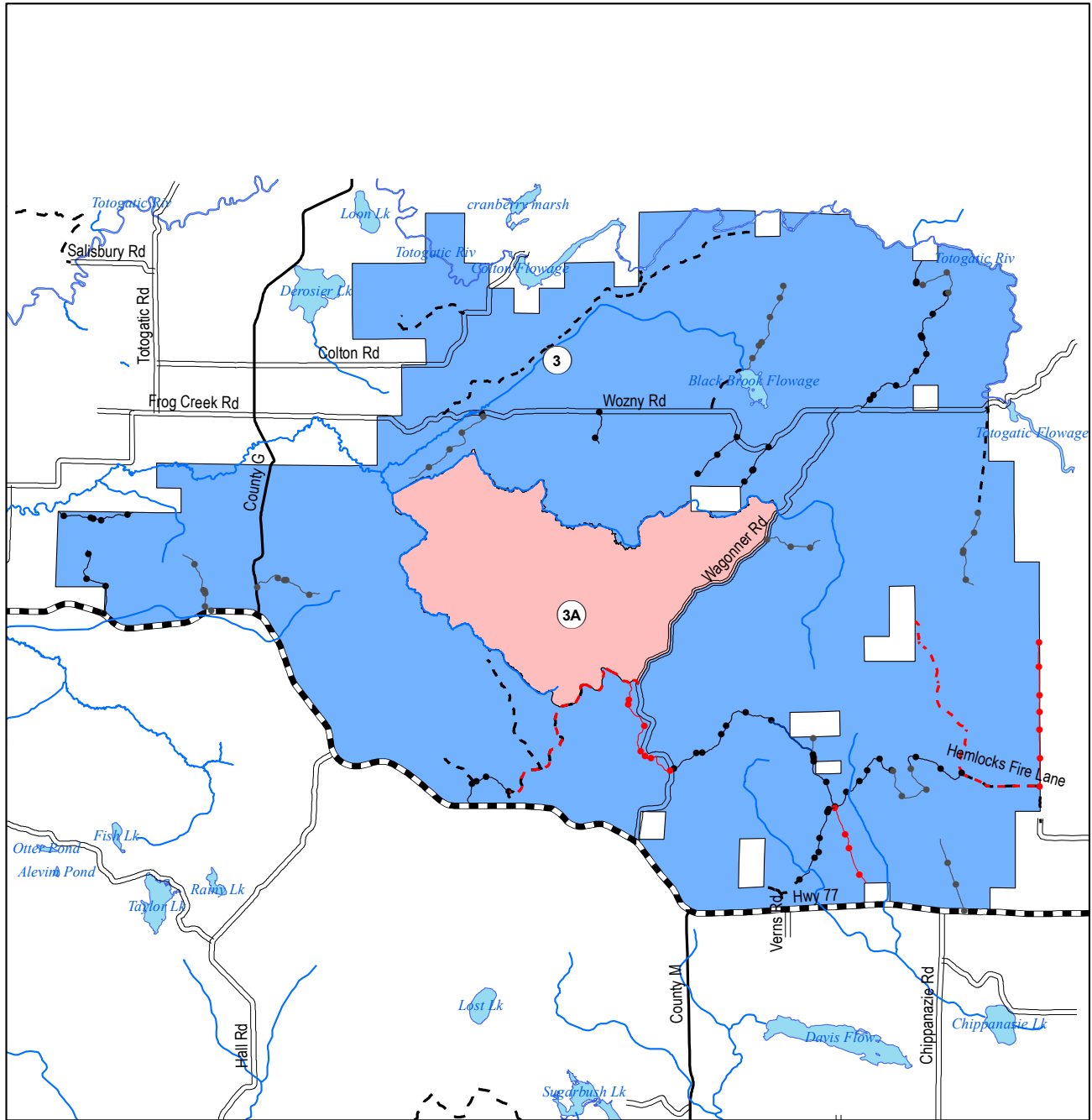
See back page for more information



<p>Legend</p> <p> Primitive Unit - Closed to Public Motor Vehicle Use, unless mapped as open Intermediate Unit - Only mapped roads open to public motorized use Open Unit - Open to public motorized use unless otherwise signed, gated or bermed </p>		<p>Access Type</p> <p> Open to ATV/UTV, cars, trucks Open ATV/UTV, cars, trucks except winter (snow trail) Open to ATV/UTV Open to ATV/Snowmobile during winter only </p>
<p>0 0.25 0.5 1 1.5 2 Miles</p>		

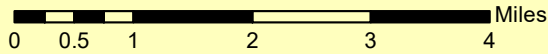
Washburn County Forest - Road and Access Plan Unit 3: Waggoner Unit and Cedar Creek Sub-Unit (3A)

See back page for more information



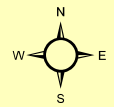
Legend

- Primitive Unit - Closed to Public Motor Vehicle Use, unless mapped as open
- Intermediate Unit - Only mapped roads open to public motorized use
- Open Unit - Open to public motorized use unless otherwise signed, gated or bermed

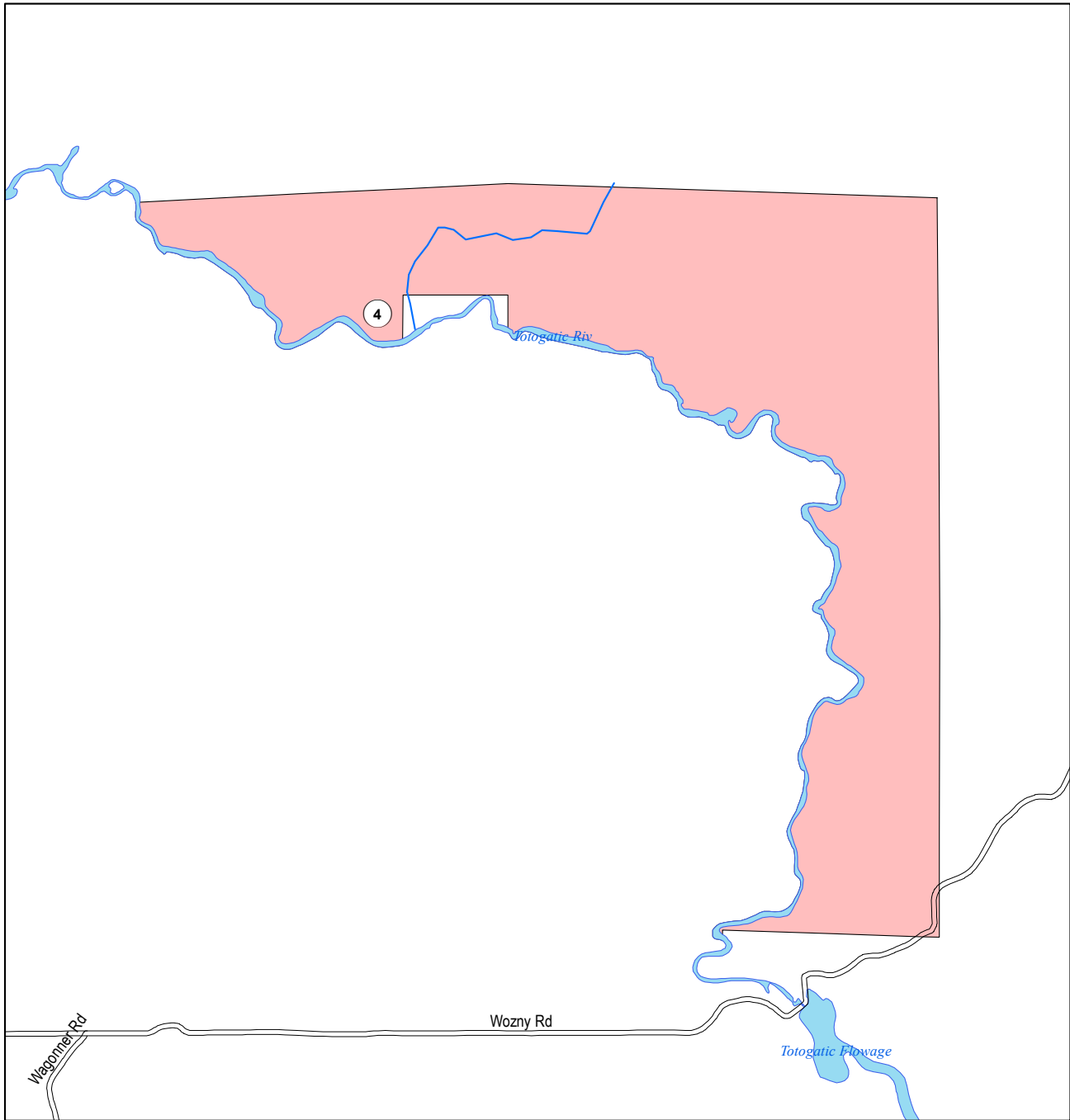


Access Type

- Open to ATV/UTV, cars, trucks
- Open ATV/UTV, cars, trucks except winter (snow trail)
- Open to ATV/UTV
- Open to ATV/Snowmobile during winter only



Washburn County Forest - Road and Access Plan Unit 4: Silent Wood Unit

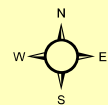


Legend

- Primitive Unit - Closed to Public Motor Vehicle Use, unless mapped
- Intermediate Unit - Only mapped roads open to public motorized use
- Open Unit - Open to public motorized use unless otherwise signed, gated or bermed

Access Type

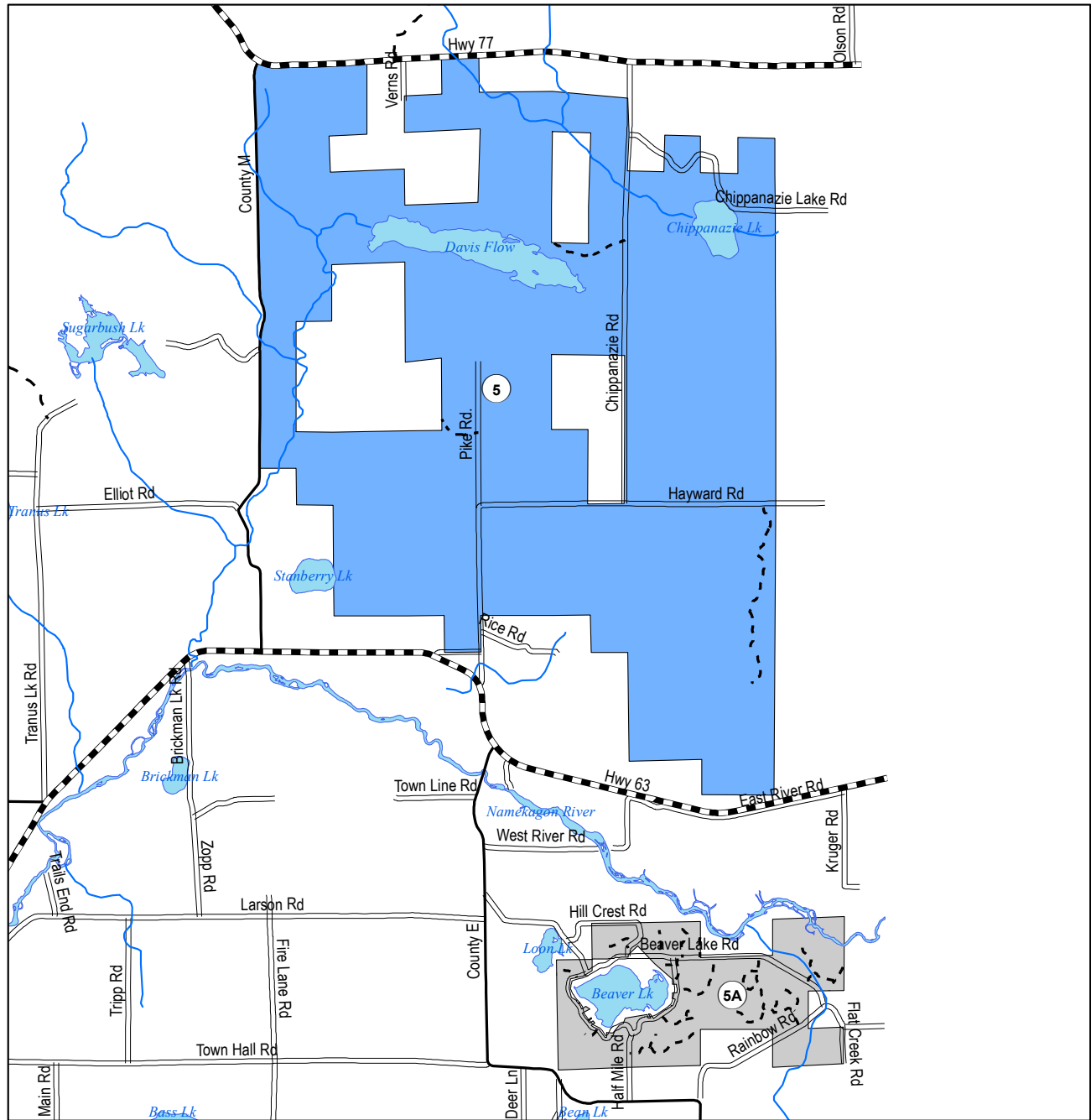
- Open to ATV/UTV, cars, trucks
- Open ATV/UTV, cars, trucks except winter (snow trail)
- Open to ATV/UTV
- Open to ATV/Snowmobile during winter only



4000.4.5

Washburn County Forest - Road and Access Plan Unit 5: Stanberry Unit and Beaver Lake Sub-Unit (5A)

See back page for more information



Legend

- Primitive Unit - Closed to Public Motor Vehicle Use, unless mapped as open
- Intermediate Unit - Only mapped roads open to public motorized use
- Open Unit - Open to public motorized use unless otherwise signed, gated or bermed

Access Type

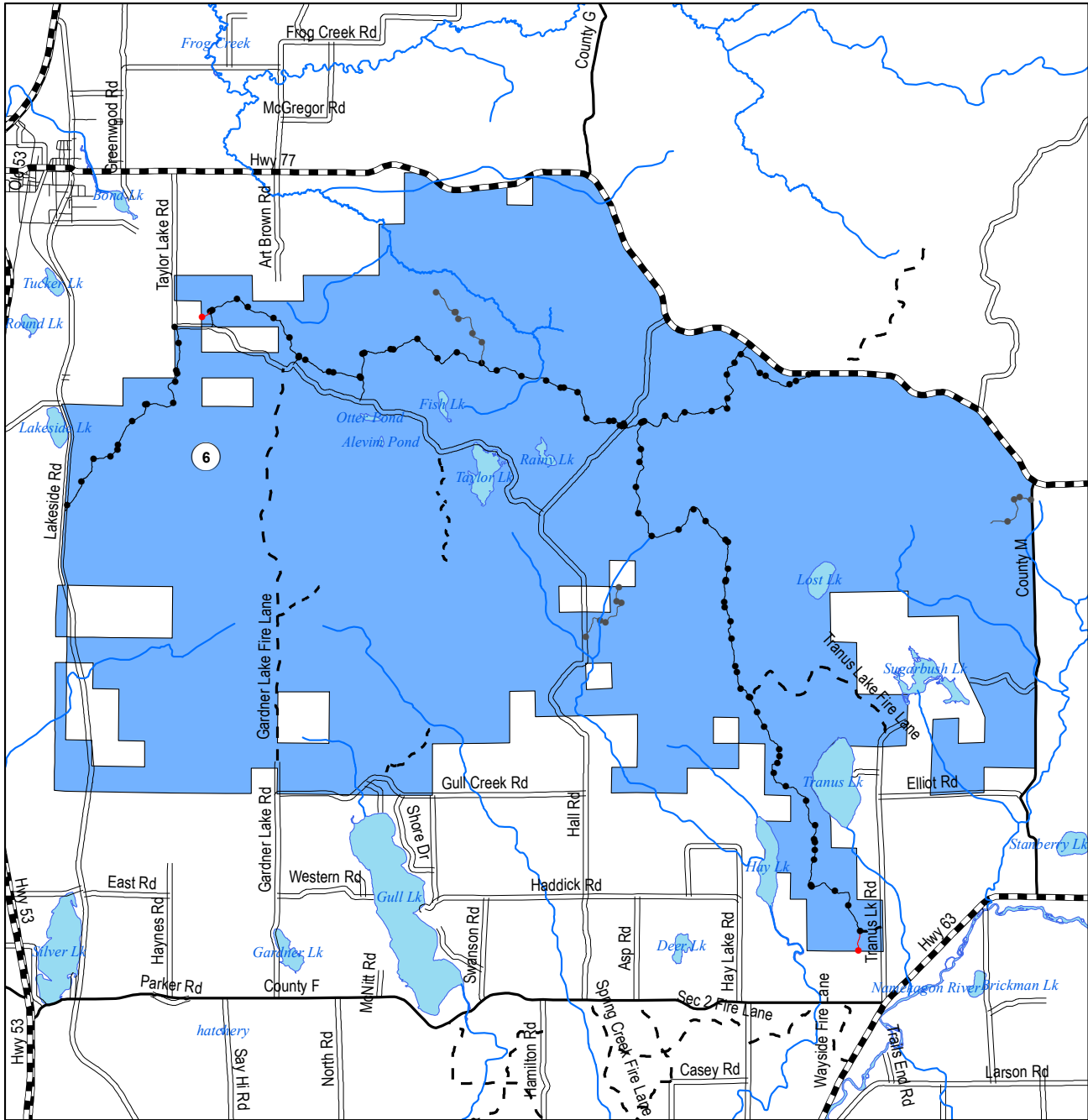
- Open to ATV/UTV, cars, trucks
- Open ATV/UTV, cars, trucks except winter (snow trail)
- Open to ATV/UTV
- Open to ATV/Snowmobile during winter only

0 0.375 0.75 1.5 2.25 3 Miles

Washburn County Forest - Road and Access Plan

Unit 6: Gardner Unit

See back page for more information

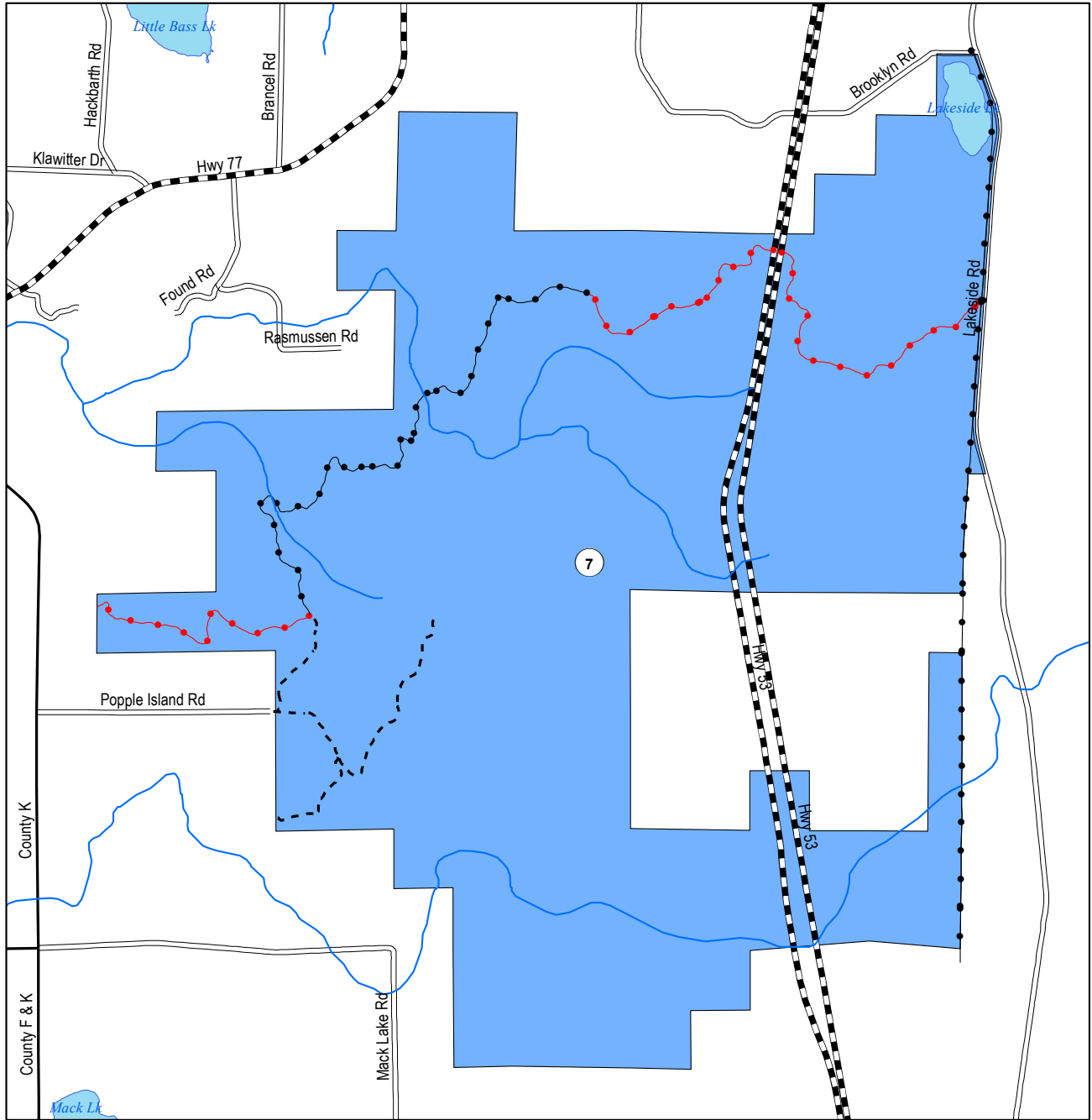


<p>Legend</p> <p> Primitive Unit - Closed to Public Motor Vehicle Use, unless mapped as open Intermediate Unit - Only mapped roads open to public motorized use Open Unit - Open to public motorized use unless otherwise signed, gated or bermed </p>		<p>0 0.5 1 2 3 4 Miles</p>	<p>Access Type</p> <p> Open to ATV/UTV, cars, trucks Open ATV/UTV, cars, trucks except winter (snow trail) Open to ATV/UTV Open to ATV/Snowmobile during winter only </p>	
--	--	----------------------------	---	--

Washburn County Forest - Road and Access Plan

Unit 7: Stuntz Brook Unit

See back page for more information

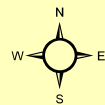
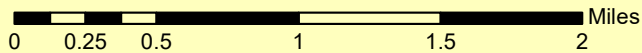


Legend

- Primitive Unit - Closed to Public Motor Vehicle Use, unless mapped as open
- Intermediate Unit - Only mapped roads open to public motorized use
- Open Unit - Open to public motorized use unless otherwise signed, gated or bermed

Access Type

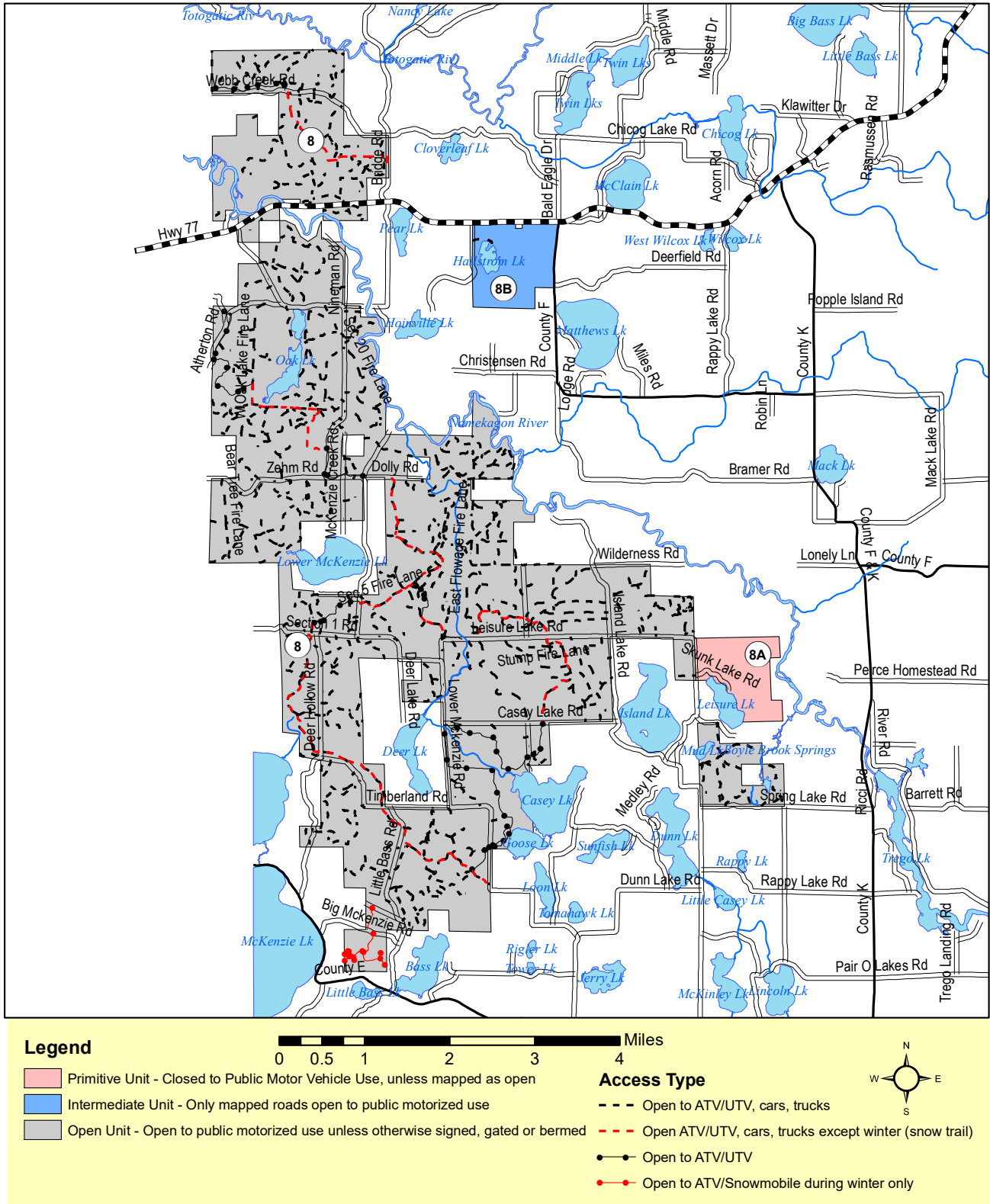
- Open to ATV/UTV, cars, trucks
- Open ATV/UTV, cars, trucks except winter (snow trail)
- Open to ATV/UTV
- Open to ATV/Snowmobile during winter only



Washburn County Forest - Road and Access Plan

Unit 8: McKenzie Unit; Youth Camp (8A) and Hallstrom (8B) Sub-Units

See back page for more information

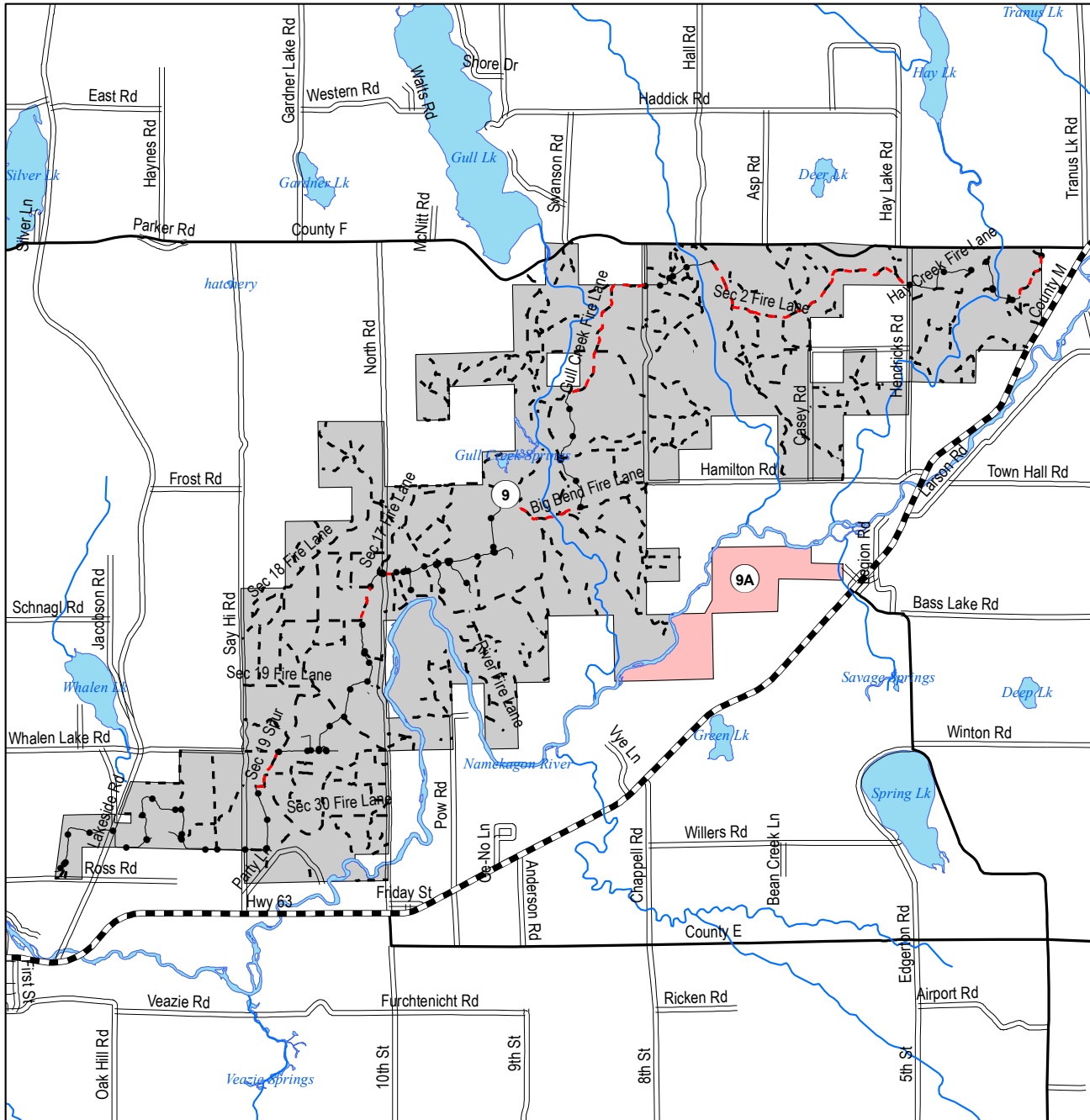


4000.4.9

Washburn County Forest - Road and Access Plan

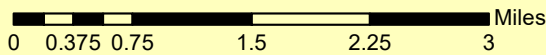
Unit 9: Namekagon Unit; Village Sub-Unit (9A)

See back page for more information



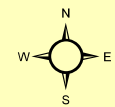
Legend

- Primitive Unit - Closed to Public Motor Vehicle Use, unless mapped as open
- Intermediate Unit - Only mapped roads open to public motorized use
- Open Unit - Open to public motorized use unless otherwise signed, gated or bermed



Access Type

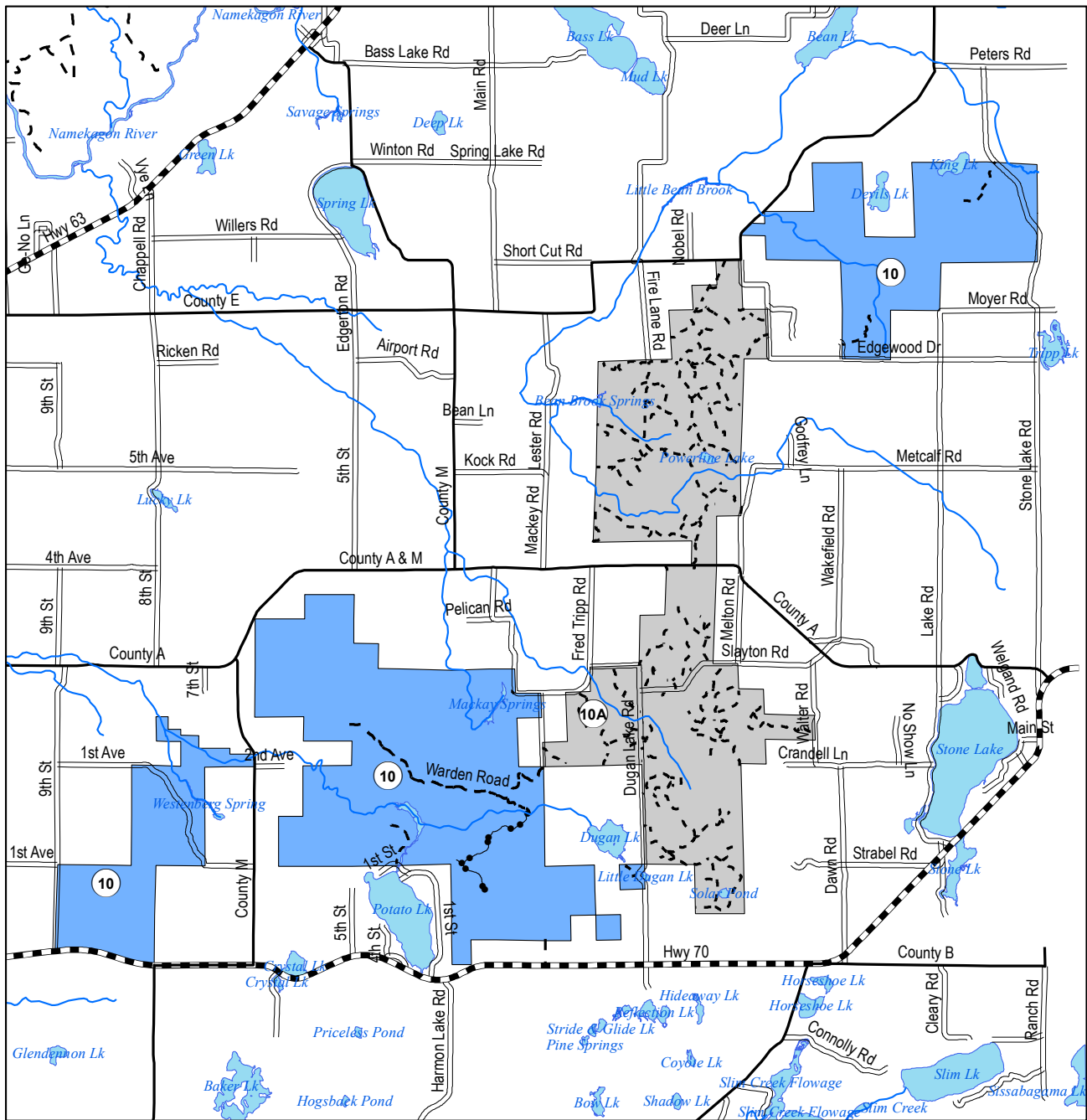
- Open to ATV/UTV, cars, trucks
- Open ATV/UTV, cars, trucks except winter (snow trail)
- Open to ATV/UTV
- Open to ATV/Snowmobile during winter only



Washburn County Forest - Road and Access Plan

Unit 10: Dugan Unit

See back page for more information



Legend

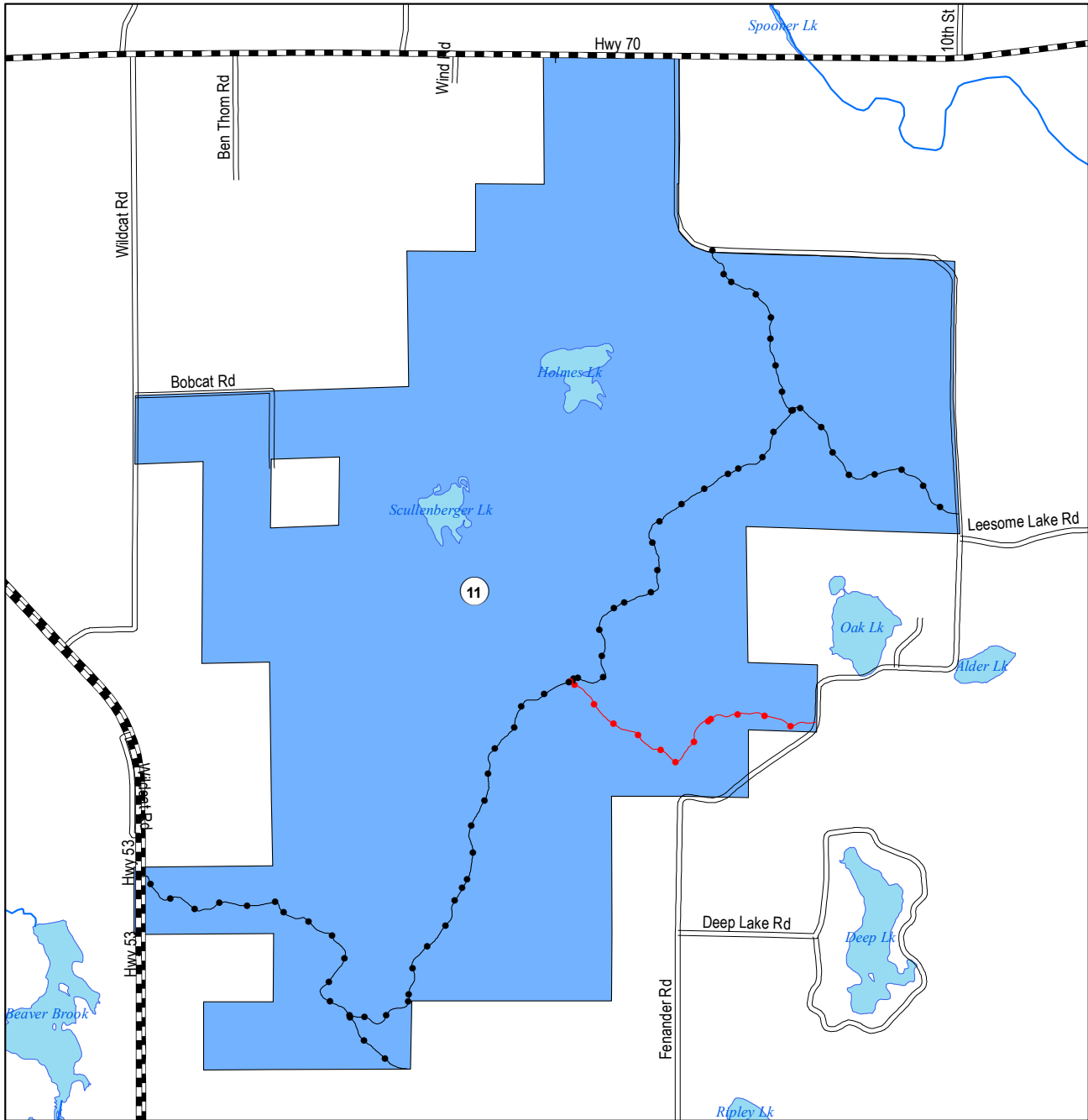
0 0.5 1 2 3 4 Miles

<ul style="list-style-type: none"> Primitive Unit - Closed to Public Motor Vehicle Use, unless mapped as open Intermediate Unit - Only mapped roads open to public motorized use Open Unit - Open to public motorized use unless otherwise signed, gated or bermed 	<p>Access Type</p> <ul style="list-style-type: none"> Open to ATV/UTV, cars, trucks Open ATV/UTV, cars, trucks except winter (snow trail) Open to ATV/UTV Open to ATV/Snowmobile during winter only 	
--	--	--

Washburn County Forest - Road and Access Plan

Unit 11: Fenander Unit

See back page for more information

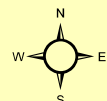
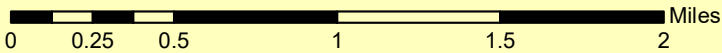


Legend

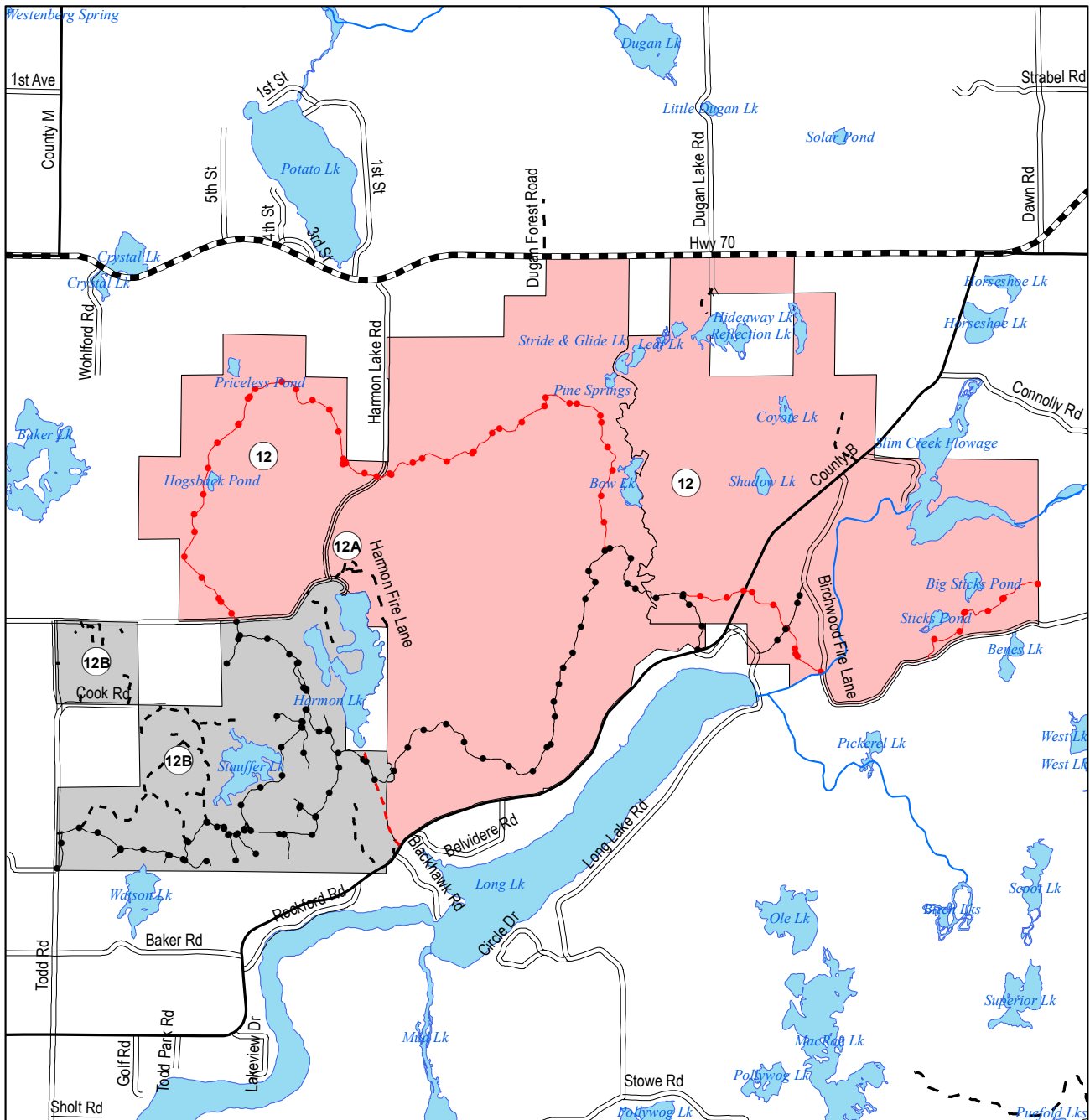
- Primitive Unit - Closed to Public Motor Vehicle Use, unless mapped as open
- Intermediate Unit - Only mapped roads open to public motorized use
- Open Unit - Open to public motorized use unless otherwise signed, gated or bermed

Access Type

- Open to ATV/UTV, cars, trucks
- Open ATV/UTV, cars, trucks except winter (snow trail)
- Open to ATV/UTV
- Open to ATV/Snowmobile during winter only



4000.4.12 Washburn County Forest - Road and Access Plan
 Unit 12: Harmon Unit; Grouse (12A) and Stauffer (12B) Sub-Units
 See back page for more information



Legend

0 0.375 0.75 1.5 2.25 3 Miles

Primitive Unit - Closed to Public Motor Vehicle Use, unless mapped as open
 Intermediate Unit - Only mapped roads open to public motorized use
 Open Unit - Open to public motorized use unless otherwise signed, gated or bermed

Access Type

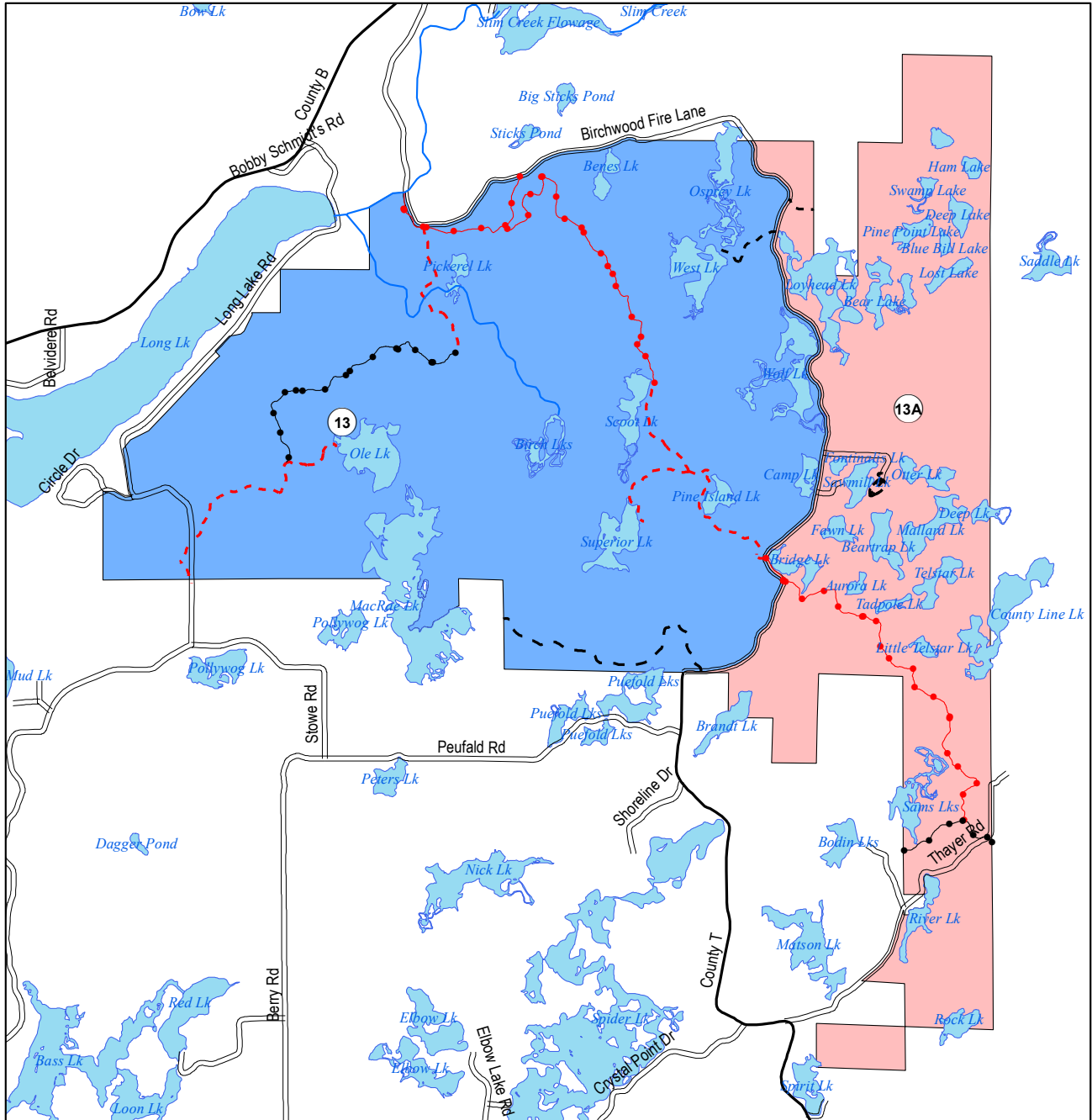
Open to ATV/UTV, cars, trucks
 Open ATV/UTV, cars, trucks except winter (snow trail)
 Open to ATV/UTV
 Open to ATV/Snowmobile during winter only

N
 W E
 S

Washburn County Forest - Road and Access Plan

Unit 13: Sawmill Unit; Birchwood Canoe (13A) Sub-Unit

See back page for more information



Legend

- Primitive Unit - Closed to Public Motor Vehicle Use, unless mapped as open
- Intermediate Unit - Only mapped roads open to public motorized use
- Open Unit - Open to public motorized use unless otherwise signed, gated or bermed

Access Type

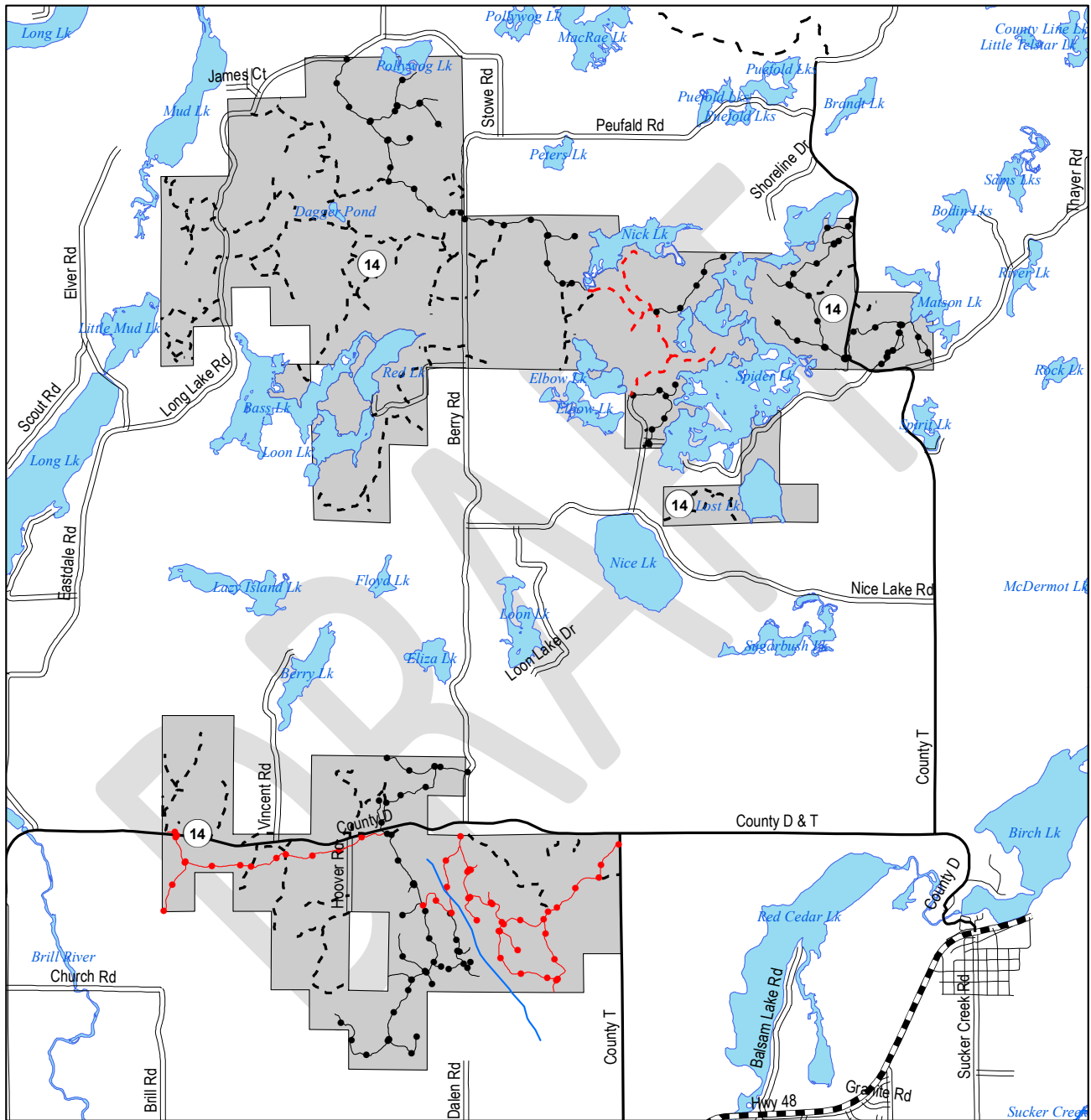
- Open to ATV/UTV, cars, trucks
- Open ATV/UTV, cars, trucks except winter (snow trail)
- Open to ATV/UTV
- Open to ATV/Snowmobile during winter only

0 0.375 0.75 1.5 2.25 3 Miles

4000.4.14

Washburn County Forest - Road and Access Plan Unit 14: Spider Lake Unit

See back page for more information



Legend

- Primitive Unit - Closed to Public Motor Vehicle Use, unless mapped as open
- Intermediate Unit - Only mapped roads open to public motorized use
- Open Unit - Open to public motorized use unless otherwise signed, gated or bermed

Access Type

- Open to ATV/UTV, cars, trucks
- - - Open to ATV/UTV, cars, trucks except winter (snow trail)
- Open to ATV/UTV
- Open to ATV/Snowmobile during winter only

Miles: 0 0.375 0.75 1.5 2.25 3

North arrow: N, S, E, W

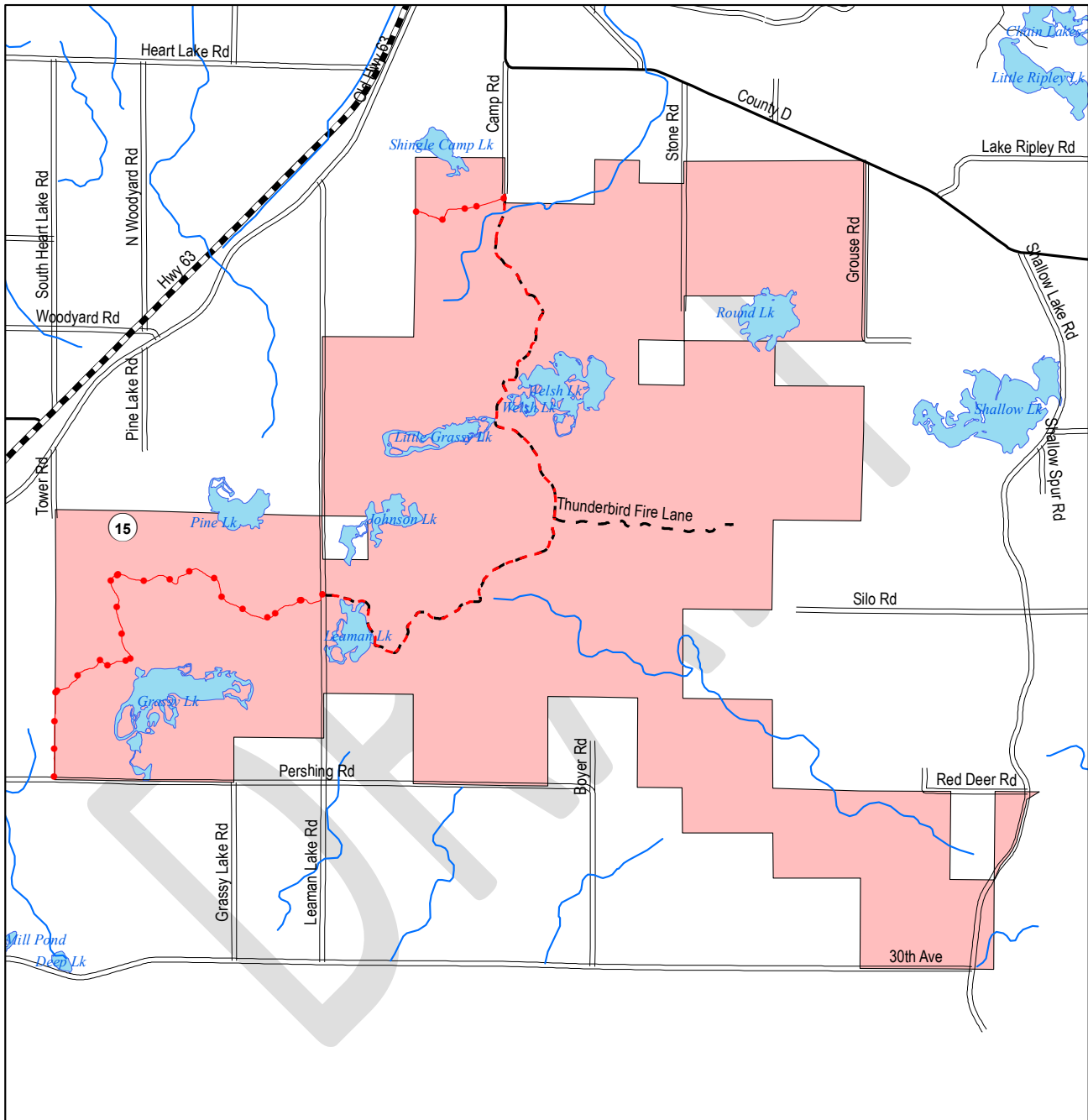
DRAFT

4000.4.15

Washburn County Forest - Road and Access Plan

Unit 15: Welsh Lake Unit

See back page for more information



<p>Legend</p> <ul style="list-style-type: none"> Primitive Unit - Closed to Public Motor Vehicle Use, unless mapped as open Intermediate Unit - Only mapped roads open to public motorized use Open Unit - Open to public motorized use unless otherwise signed, gated or bermed 	<p>Miles</p>	
	<p>Access Type</p> <ul style="list-style-type: none"> Open to ATV/UTV, cars, trucks Open ATV/UTV, cars, trucks except winter (snow trail) Open to ATV/UTV Open to ATV/Snowmobile during winter only 	

