

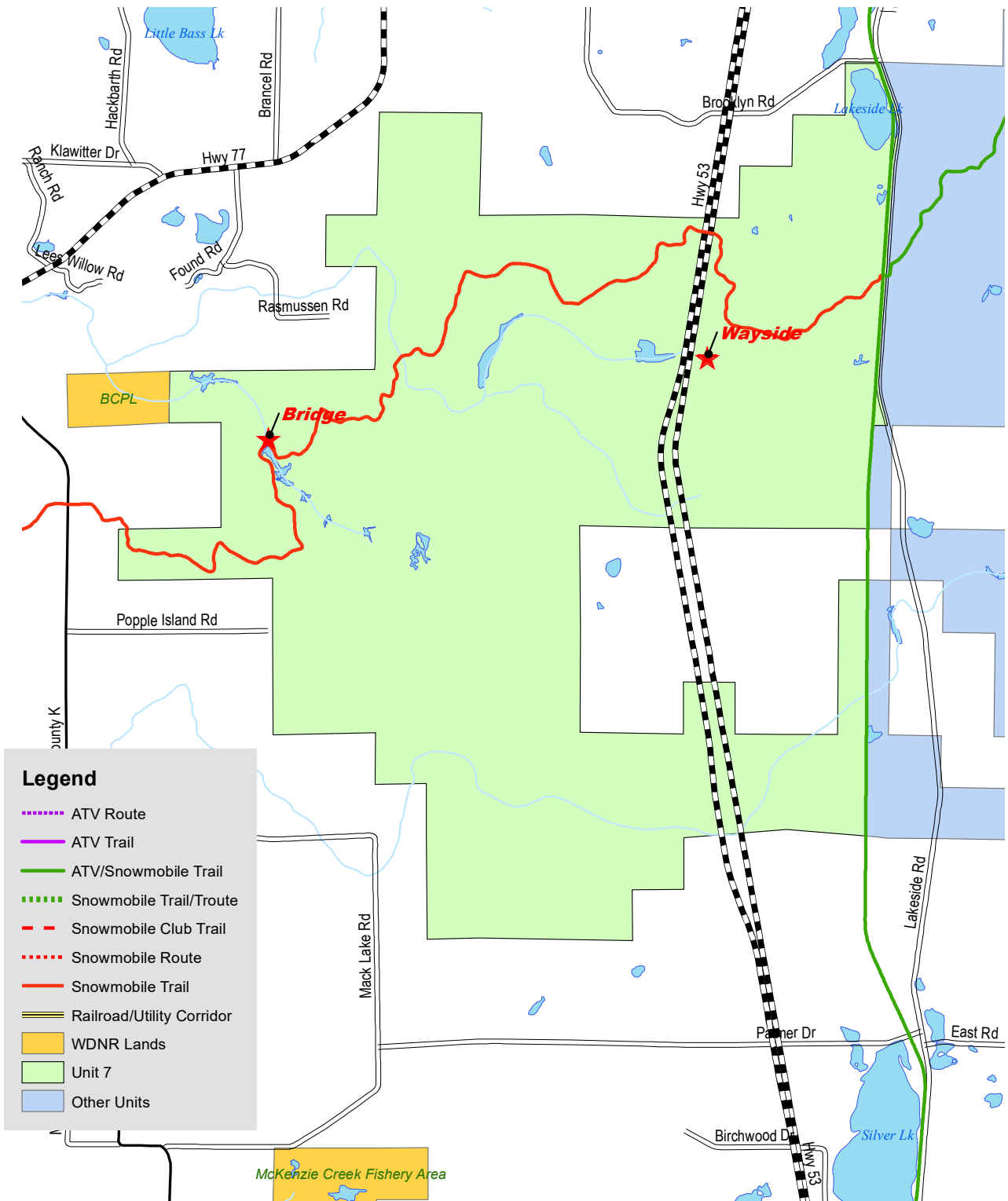
WASHBURN COUNTY FOREST COMPREHENSIVE LAND USE PLAN  
INTEGRATED RESOURCE MANAGEMENT UNITS  
**CHAPTER 3000.7 – STUNTZ BROOK UNIT**

TABLE OF CONTENTS

3000.7.1	<a href="#">RESOURCE MAP</a> .....	3000.7-3
3000.7.2	<a href="#">FOREST RECONNAISSANCE COMPARTMENTS</a> .....	3000.7-5
3000.7.3	<a href="#">UNIT ACREAGE</a> .....	3000.7-5
3000.7.4	<a href="#">FOREST TYPES</a> .....	3000.7-5
3000.7.5	<a href="#">ECOLOGICAL LANDSCAPES</a> .....	3000.7-5
3000.7.6	<a href="#">LANDFORMS</a> .....	3000.7-6
3000.7.7	<a href="#">SOILS</a> .....	3000.7-6
3000.7.8	<a href="#">FOREST HABITAT TYPES</a> .....	3000.7-6
3000.7.9	<a href="#">WATER RESOURCES</a> .....	3000.7-6
3000.7.10	<a href="#">RECREATION</a> .....	3000.7-7
3000.7.11	<a href="#">HISTORICAL, CULTURAL, ARCHEOLOGICAL</a> .....	3000.7-7
3000.7.12	<a href="#">PROTECTION NEEDS</a> .....	3000.7-7
3000.7.13	<a href="#">AESTHETICS</a> .....	3000.7-8
3000.7.14	<a href="#">LAND CONTROL</a> .....	3000.7-8
3000.7.15	<a href="#">FOREST MANAGEMENT GOALS AND GUIDELINES</a> .....	3000.7-8
3000.7.16	<a href="#">SITE SPECIFIC MANAGEMENT GOALS AND GUIDELINES</a> .....	3000.7-9
3000.7.17	<a href="#">FOREST TYPES MAP</a> .....	3000.7-11
3000.7.18	<a href="#">SOIL TYPES MAP</a> .....	3000.7-12

*Approved by Washburn County Board of Supervisors October 19, 2021  
No Revisions*

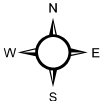




**Legend**

- ..... ATV Route
- ..... ATV Trail
- ..... ATV/Snowmobile Trail
- ..... Snowmobile Trail/Troute
- - - Snowmobile Club Trail
- ..... Snowmobile Route
- ..... Snowmobile Trail
- ==== Railroad/Utility Corridor
- WDNR Lands
- Unit 7
- Other Units

0 0.25 0.5 1 1.5 2 Miles





- 3000.7.2 COMPARTMENTS 65, 66, 67  
 3000.7.3 ACRES 5,310 (former unit 13)  
 3000.7.4 FOREST TYPES

FOREST TYPE	1995 ACRES	1995 PERCENT	2005 ACRES	2005 PERCENT	2020 ACRES	2020 PERCENT
ASPEN	2111	39.8%	2317	43.6%	2145	40.3%
SWAMP HARDWOOD	659	12.4%	815	15.3%	760	14.3%
LOWLAND BRUSH	501	9.4%	594	11.2%	603	11.4%
SWAMP CONIFER	216	4.1%	374	7.0%	433	8.2%
NON FORESTED WETLAND	232	4.4%	163	3.3%	331	6.2%
TAMARACK	146	2.7%	224	4.2%	319	6.0%
NORTHERN HARDWOOD	105	2.0%	175	3.3%	244	4.6%
CEDAR	185	3.5%	289	5.4%	198	3.7%
RED PINE	102	1.9%	103	1.9%	115	2.2%
FIR / SPRUCE	97	1.8%	131	2.5%	52	1.0%
WATER	66	1.2%	65	1.2%	49	0.9%
WHITE BIRCH	42	0.8%	1	0.0%	24	0.5%
RED OAK	801	15.1%	33	0.6%	22	0.4%
GRASS	19	0.4%	7	0.1%	10	0.2%
WHITE PINE	12	0.2%	5	0.1%	5	0.1%
UPLAND BRUSH	16	0.3%	14	0.3%	0	0.0%
<b>TOTAL</b>	<b>5310</b>	<b>100.00%</b>	<b>5310</b>	<b>100.00%</b>	<b>5310</b>	<b>100.00%</b>

*\*changes from 1995 to 2005 are to be used for general comparison. Certain data sets are calculated due to restructuring of IRMU units in 2020. Other changes may reflect changes in mapping accuracy or changes in forest type definitions. 1995 and 2005 data is an estimate based on prior reported percentages applied to current acreage.*

### 3000.7.5 ECOLOGICAL LANDSCAPES

This unit is primarily within the Northwest Sands Ecological Landscape. This landscape indicates management opportunities for dry forests such as jack pine, red pine, scrub oak, and associates such as aspen. There are also opportunities to mimic barrens characters by emulating historic fire patterns through harvesting practices. There may be some opportunity to provide for presumed climax overstory by managing some sites towards white pine, red pine types.

There are areas along the eastern boundary and in the northwest that overlap into the North Central Ecological Landscape. This landscape provides opportunities for mesic forests such as northern hardwood, oak, aspen/birch on the uplands as well as swamp conifer and swamp

hardwood in the lowlands. There may be some opportunities to promote hemlock hardwood, yellow birch, and natural white pine.

#### 3000.7.6 LANDFORMS

Landforms within this unit are rolling collapsed outwash plain (*Webb Lake Collapsed Barrens LTA*) and rolling collapsed moraine with swamps common (*Hayward Moraines LTA*)

#### 3000.7.7 SOILS

A majority of the soils in this unit are hydric, with most classified as muck (*Seelyeville and Markey soils and others*) and other significant areas that are peat (*Loxley Muck Peat*). A higher percentage of upland soils are loamy sands (*Grettum Loamy Sand; Graycalm-Menahga complex; Keweenaw-Sayner-Vilas complex and others*) lying in the southwest ¼ and the far northeast. There are also significant components of sandy loam, mostly in the north ½, (*Fremstadt Stony-Cress complex and others*), as well as some areas of silt loam in the north central portion of the unit (*Frog Creek Silt Loam and Stinnett Silt Loam*).

#### 3000.7.8 FOREST HABITAT TYPES

Large areas of this unit are dominated by wetlands. The upland habitats are comprised of both PArVAm and AVDe.

PArVAm opportunities are generally limited to aspen and jack pine. Red and white pine management opportunities may be present. Oak can be managed but since it would likely be northern pin oak, pushing stands towards oak is not recommended.

AVDe provides opportunities for early successional management of primarily aspen, as well as opportunity for red oak management, although on a shorter rotation basis and generally lower quality and less vigorous growth. Pine management, both natural and plantation are also options on a limited basis.

*See Section 800.1.3 for more detailed information on forest habitat types.*

#### 3000.7.9 WATER RESOURCES

The water resources in the northern 2/3 of this unit are part of the Totogatic River watershed, generally flowing north into the Totogatic, then west, southwest to the Namekagon and St. Croix

rivers. The southern 1/3 of this unit is part of the Lower Namekagon Watershed, generally flowing west and southwest to the Namekagon, below Trego Lake and into the St. Croix River.

Lakes with County Forest Frontage

<b>Name</b>	<b>Acres</b>	<b>Frontage</b>	<b>Fishery</b>	<b>Designations</b>
None				

Lakes within County Forest

<b>Name</b>	<b>Acres</b>	<b>Fishery</b>	<b>Designations</b>
Lakeside Lake	34.0	Yes	None
11 unnamed ponds	62.7	No	None

Rivers and Stream with County Forest

<b>Name</b>	<b>Miles</b>	<b>Type</b>	<b>Fishery</b>	<b>Designations</b>
Stuntz Brook	3.8	Cold Water	Class II Trout	ORW
N. Branch Chicog	1.6	Warm Water	No	None
Little Chicog Creek	1.7	Warm Water	No	None
Chicog Creek	3.5	Warm Water	No	None
2 unnamed	0.4	Warm Water	No	None

3000.7.10 RECREATION

- Snowmobile Trail 8 runs across the northern section of this unit.
- The Wild River State Trail abuts the eastern boundary of this unit

3000.7.11 HISTORICAL, CULTURAL, ARCHEOLOGICAL

There are no known historical, cultural or archeological resources identified within this unit.

3000.7.12 PROTECTION NEEDS

- Snowmobile Trail 8 crosses a large wetland complex. This area should be monitored for illegal motor vehicle use.
- At one time a heron rookery was recognized within the unit.
- The area has a history of illegal motorized travel originating from hunting cabins on adjacent private lands.

### 3000.7.13 AESTHETICS

- Highway 53 is an Aesthetic Zone. While there are not specific mitigating techniques prescribed here, management will generally be tailored to minimize the aesthetic impact of even aged harvests. As a general philosophy, management will not be hidden, but visual impact should be mitigated through staggered harvest, irregular boundaries, and possibly conversion to northern hardwood types.

### 3000.7.14 LAND CONTROL

#### Utility Easements/Agreements

- NWSW 13; NWSW, SWSW 24 T41N-R12W. Underground electrical easement on west side of Lakeside Road granted to Dahlberg Light & Power in 2008. No evidence of recorded document.

#### Easements Granted to Private Parties

- NW ¼ 21 T41N-R12W. Private easement withheld from Penta acquisition. Easement runs from end of Popple Island to SENE 20 T41N-R12W. Recorded 229969.

#### Road Use Agreements to Private Parties

- SWNW 23 & NWSW 13 T41N-R12W. Reciprocal access between Wetzel and Washburn County. Issue to George Wetzel in perpetuity.

#### DOT

- NWNW 11 T41N-R12W. DOT driveway permit 0.6 miles south of Brooklyn Road west side of 53.

#### Other

- NESE 14 T41N-R12W. Wetzel Agreement allows for County timber/forestry access on an existing roadway running from the east line to the Wild River Trail.
- SENE 2 T41N-R12W. There have been historic issues of posting the north line adjacent to Brooklyn Road. The Town Road does not lie on the section line, but Washburn County asserts that the property abuts the road ROW. There are also dock structures encroaching into wetland areas from land ownership on the west side of this parcel.

### 3000.7.15 FOREST MANAGEMENT GOALS AND GUIDELINES



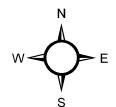
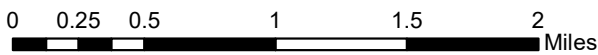
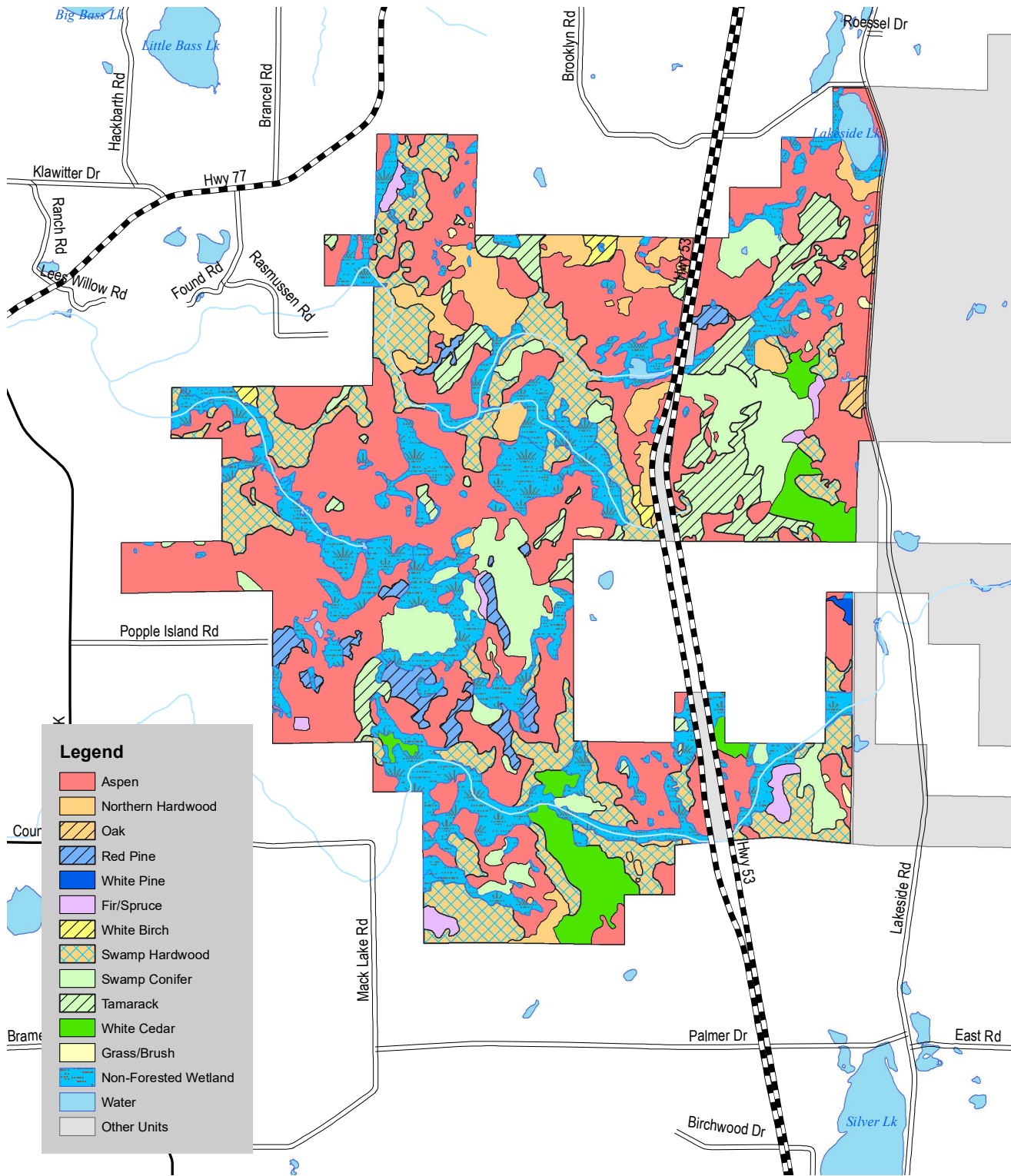
1. Recommendations in this Plan generally include goals to retain aspen acres on the landscape. This unit, however, has upland types generally dominated by aspen. Reductions in aspen are recommended in circumstances where there are options to push stands to other types for diversity.
2. The northern hardwood stands, while they may be on soils that are not entirely suited for them, should be managed to remain as hardwood.
3. Look for opportunities to retain and promote oak within the unit.
4. There may be opportunities to promote natural white pine stands within this unit. Promote where practical.
5. Maintain the existing stands of red pine and balsam fir. Make attempts to regenerate these sites as they come due for rotation and consider increasing natural conifers in general within the unit.

#### 3000.7.16 SITE SPECIFIC MANAGEMENT OPPORTUNITIES

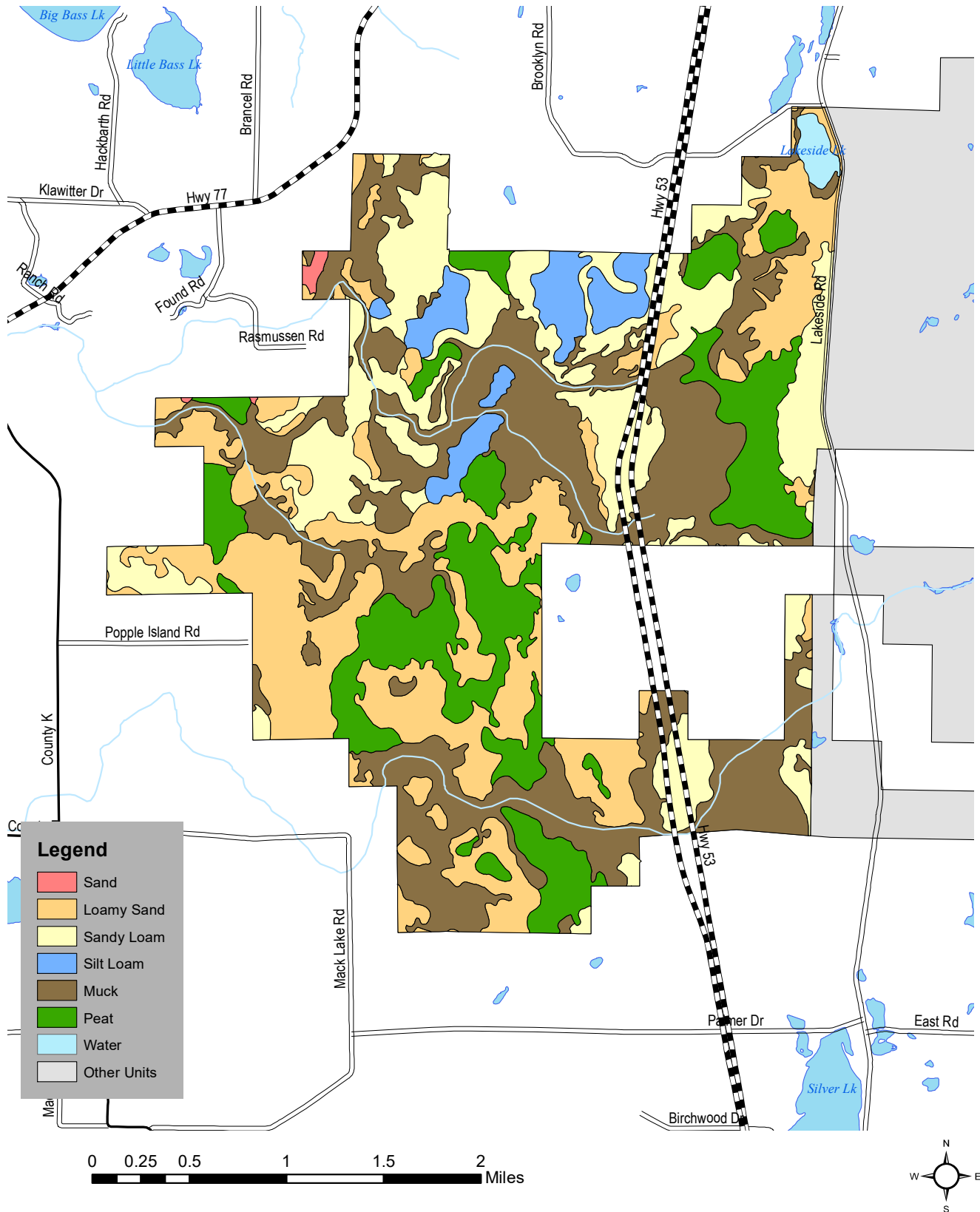
1. Place a priority on land acquisition opportunities that would create access to the area south of Stuntz Brook.
2. Acquisition of any of the scattered in holdings within this unit could be considered but not at the loss of opportunity to acquire land locked parcels in other units.
3. Consider parking areas along Highway 53.
4. Look for opportunities to relocate the existing snowmobile trail in order to avoid the wetland area west of 53.



3000.7.17 GENERAL FOREST TYPES MAP



3000.7.18 GENERAL SOILS MAP



**Legend**

- Sand
- Loamy Sand
- Sandy Loam
- Silt Loam
- Muck
- Peat
- Water
- Other Units